

TABLE OF CONTENTS

3rd EDITION

MAY 1, 1986

3000 SERIES REEL RAIN

SECTION	PAGE
1. MAIN FRAME / TURNTABLE / TONGUE SECTION -----	3
2. COMPLETE FRAME / TRAVERSE / SHIELDS SECTION -----	5,6,7
3. SHAFT AND BRAKE SECTION -----	9,10,11
4. PLUMBING SECTION -----	13,14,15
5. WATER TURBINE SECTION -----	17
6. DIESEL ENGINE SECTION -----	19,20,21
7. 4 HP GASOLINE ENGINE SECTION -----	23,24,25
8. 5 HP GASOLINE ENGINE SECTION -----	27,28,29
9. ENGINE DRIVE REEL COMPENSATOR -----	31
10. DRUM REEL SECTION -----	33
11. HOSE SECTION -----	35
12. GUN CART LIFT SECTION -----	37
13. SPEED INDICATOR KITS -----	39
14. M30 GUNCART SECTION -----	41
15. NELSON GUNS / NOZZLES SECTION -----	43
16. NELSON P200 GUN COUNTERWEIGHT SECTION -----	45
17. REEL RAIN TOWING KIT SECTION -----	47
18. M30 GUNCART SPECIFICATIONS -----	48
19. REEL RAIN SPECIFICATIONS -----	49
NUMERICAL PARTS INDEX -----	50,51,52,53
WARRANTY	

NOTE

THE TERMS "LEFT" AND "RIGHT" USED IN THE DESCRIPTION OF PARTS ARE DETERMINED BY FACING THE DIRECTION OF TRAVEL OF THE MACHINE.

Owners Name _____
Address _____
Model No. _____ * Serial No. _____ * Date Purchased _____

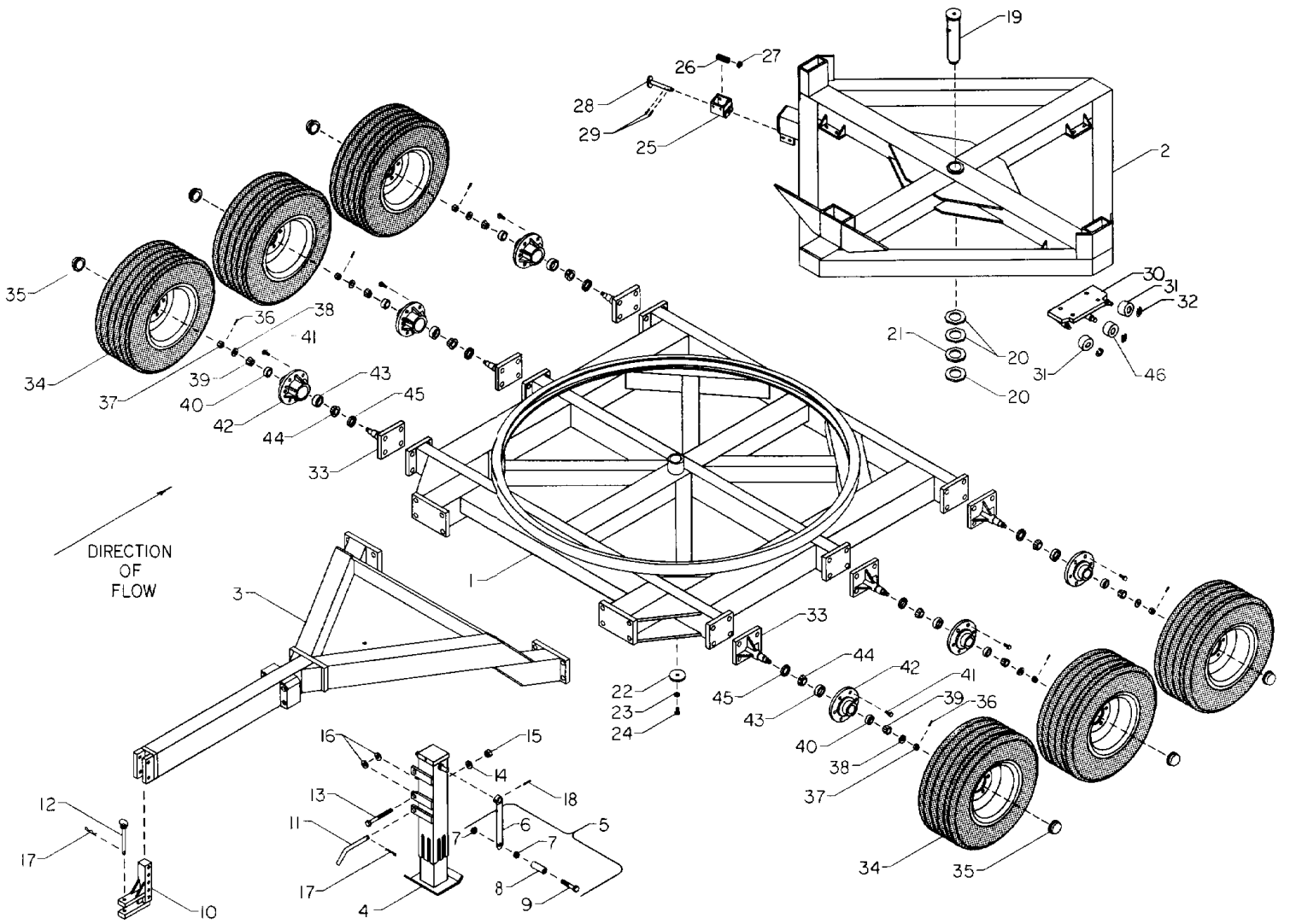


1100 Holland Road Suffolk, Va. 23434 U.S.A. • 804-539-0231

Home Office: TELX-823-600 Cabel-HOADEN SUFK
Branch Office

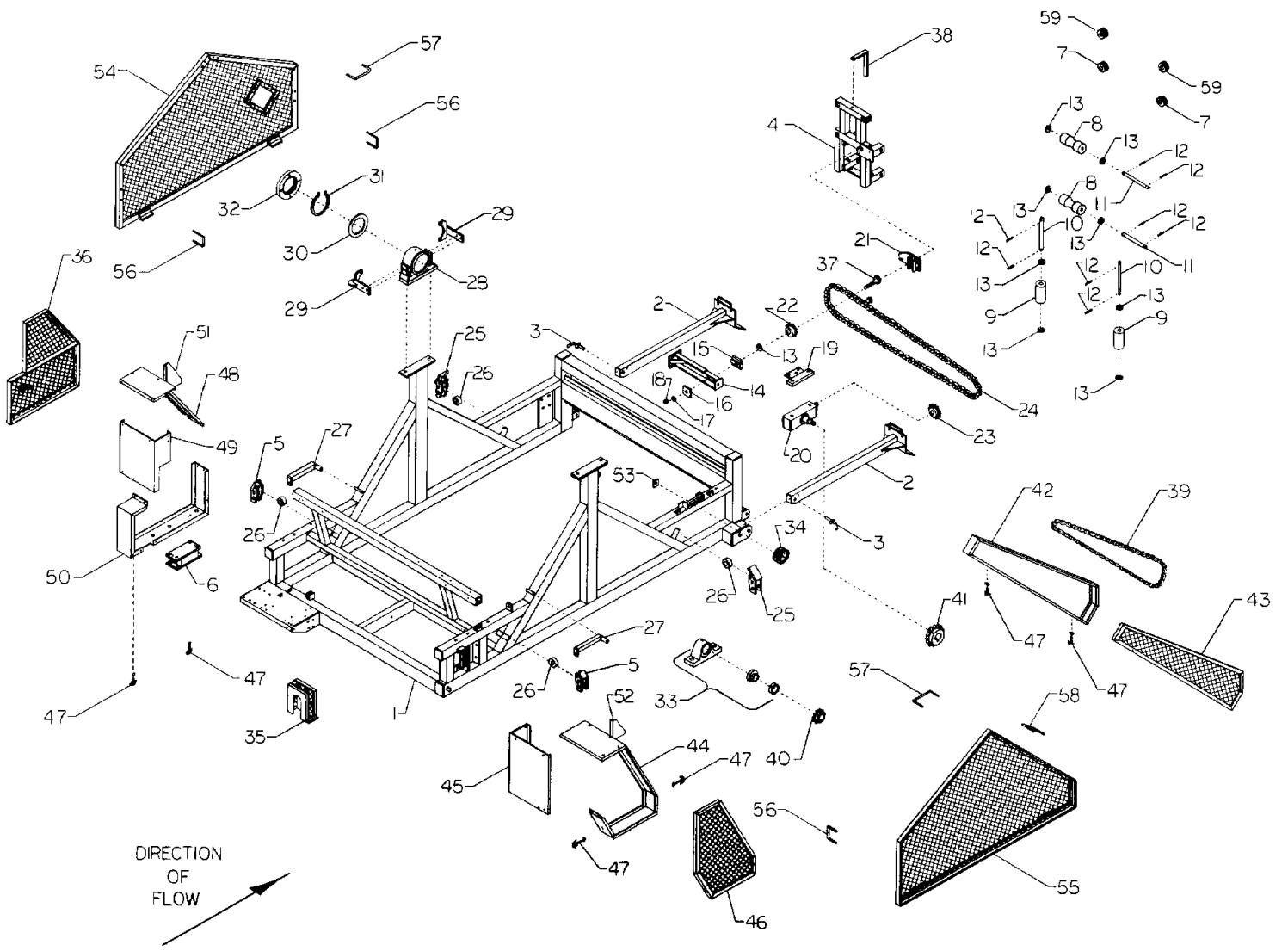
1701 S. Slappey Blvd. Albany, Ga. 31706 • 912-439-2217

©1986



1. MAIN FRAME / TURNTABLE / TONGUE SECTION

NO.	PART NO.	KEYWORD	DESCRIPTION	NO. REQ'D
1	9948	FRAME	MAIN	1
2	9949	TABLE	TOP TURN	1
3	9859	TONGUE	Y-SHAPE	1
4	6931	STAND	JACK	1
5	S6932	ASSEMBLY	JACK STAND CRANK HANDLE	1
6	6932	HANDLE	JACK STAND	1
7	G120377	NUT	3/8-16 USS	2
8	6574	GRIP	HANDLE	1
9	G189305	SCREW	3/8-16 X 3-1/2 USS CAP	1
10	9860	HITCH	ADJUSTABLE TONGUE	1
11	1426	PIN	JACK STAND	1
12	2056	PIN	HITCH	OPT
13	G9429892	SCREW	3/4-10 X 7 USS CAP	1
14	G131046	LOCKWASHER	3/4	1
15	G220086	NUT	3/4-10 USS	1
16	G131017	WASHER	3/4 SAE FLAT	2
17	2196	PIN	FLATTED HAIR COTTER	2
18	2334	PIN	3/8 X 2 ROLL	1
19	1435	PIN	TURNTABLE KING	1
20	60108	SPACER	TURNTABLE, THIN	3
21	60103	SPACER	TURNTABLE, THICK	1
22	60092	STOP	PIN	1
23	G120384	LOCKWASHER	1/2	1
24	G180175	SCREW	1/2-13 X 1-1/4 USS CAP	1
25	6958	GUIDE	TURRET LATCH	1
26	7630	SPRING	HANDLE, SELECT-A-SPRING #173	1
27	G131017	WASHER	3/4 SAE FLAT	1
28	1413	LATCH	TURRET	1
29	2366	PIN	1/4 X 1-1/2 ROLL	2
30	90193	SPINDLE	TURNTABLE	4
31	5622	ASSEMBLY	TURNTABLE ROLLER RR3000	8
---	5621	ROLLER	TURNTABLE TRACK (RR3000)	A/R
---	3118	BEARING	1"ID X 2"OD AIRCRAFT	A/R
---	7042	RING	RETAINING (3000X200)	A/R
---	121141	SPACER	TURNTABLE ROLLER	A/R
32	2374	RING	1"ID. X .046 SNAP	12
33	9878	SPINDLE	MAIN FRAME	6
34	S8070	ASSEMBLY	15" TIRE AND WHEEL, TUBELESS	6
---	8070	WHEEL	15" WIDE BASE, 6 LUGS	6
---	8071	TIRE	11L X 15", 10 PLY	6
---	8650	STEM	VALVE, (FOR TUBELESS TIRE)	6
35	8603J	CAP	HUB	6
36	8020	PIN	COTTER	6
37	8603F	NUT	CASTLE	6
38	8603G	WASHER	SPINDLE	6
39	8603B	BEARING	ROLLER, SMALL	6
40	8603D	CUP	BEARING, OUTER	6
41	8017	BOLT	LUG	36
42	8603	HUB	15", WITHOUT SPINDLE AND WHEEL	6
43	8603C	CUP	BEARING, INNER	6
44	8603A	BEARING	ROLLER, LARGE	6
45	8603E	SEAL	HUB BEARING	6
46	5540	ROLLER	TURNTABLE ASS'Y, W/BEARING	4
---	5536	ROLLER	TURNTABLE	A/R
---	3118	BEARING	1"ID X 2"OD AIRCRAFT	A/R
---	7042	RING	RETAINING (3000X200)	A/R



2. COMPLETE FRAME / TRAVERSE / SHIELDS SECTION

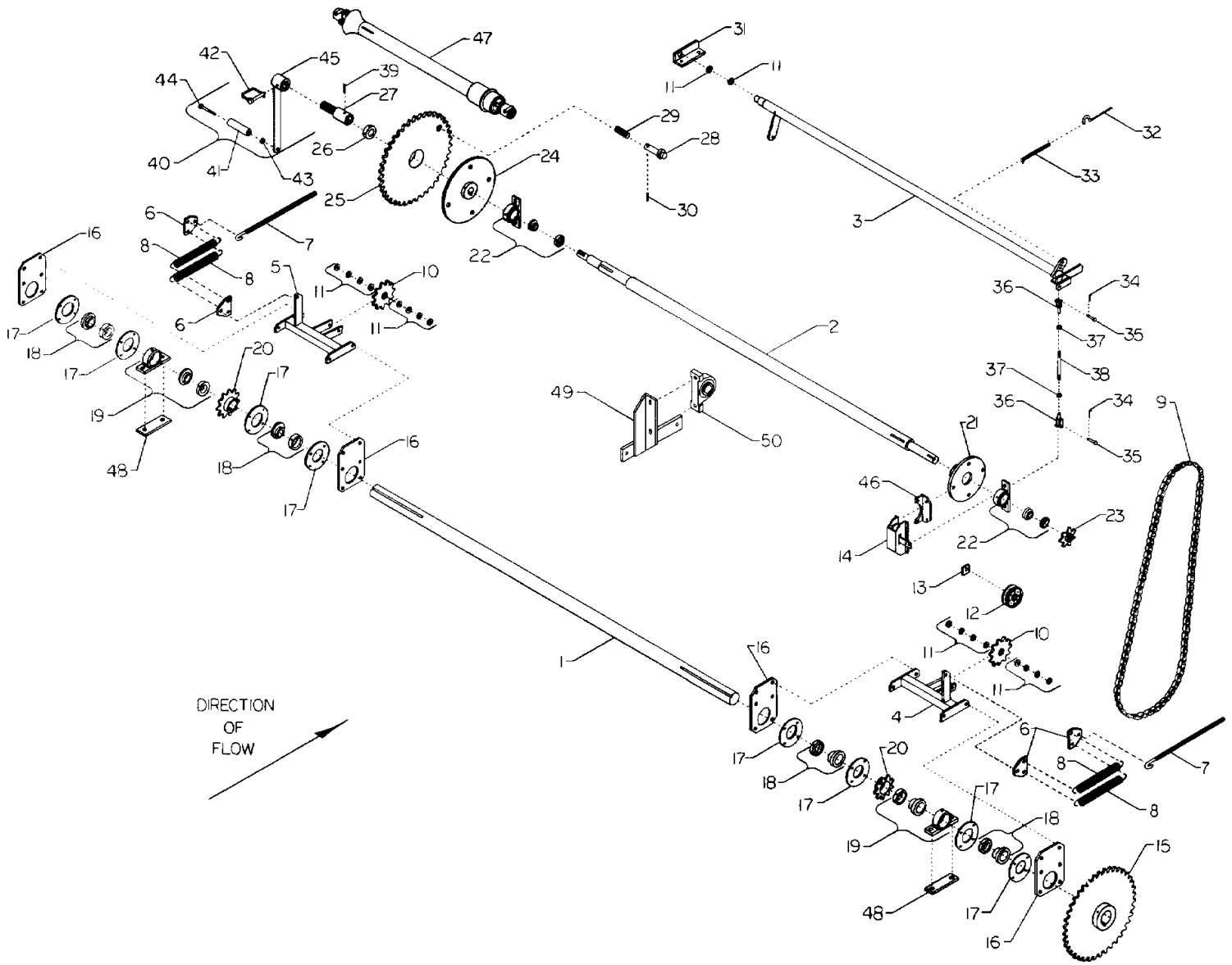
NO.	PART NO.	KEYWORD	DESCRIPTION	NO.	REQ'D
1	9956	FRAME	COMPLETE MAIN IRRIGATOR	1	
2	6935	CHOCK	IRRIGATOR	2	
3	1399	FIN	CHOCK	2	
4	9973	CRADLE	TRAVERSE	1	
5	9935	MOUNT	DRUM ROLLER, SHORT	2	
6	6956	MOUNT	MAIN GEARBOX	1	
7	8587	ROLLER	TRAVERSE	2	
8	8797	ROLLER	HORIZONTAL HOSE GUIDE	2	
9	8796	ROLLER	VERTICAL HOSE GUIDE	2	
10	10181	SHAFT	VERTICAL HOSE GUIDE	2	
11	10198	SHAFT	HORIZONTAL HOSE GUIDE	2	
12	2366	FIN	1/4 X 1-1/2 ROLL	8	
13	G131017	WASHER	3/4 SAE FLAT	9	
14	9871	MOUNT	CHAIN IDLER	1	
15	6953	FLAT	BUSHING MOUNTING	1	
16	6952	MOUNT	REAR BUSHING	1	
17	G131046	LOCKWASHER	3/4	1	
18	G220086	NUT	3/4-10 USS	1	
19	9865	MOUNT	TRAVERSE GEARBOX	1	
20	11095	GEARBOX	BROWNING, 1 TO 1 FOOT MOUNT	1	
21	9870	MOUNT	BUSHING, (TRAVERSE)	1	
22	51032	SPROCKET	TRAVERSE ASSEMBLY, (PRESS FIT)	1	
23	51031	SPROCKET	TRAVERSE, BOBB WITH 1" BORE	1	
24	S4367B	CHAIN	TRAVERSE ASSEMBLY, WITH BUSHING	1	
---	4367	BUSHING	BRONZE, WITH CONNECTING LINK	1	
---	4365-143P	CHAIN	NO.80, 143 PITCHES	1	
---	4365A	LINK	NO.80 OFFSET	1	
25	9866	MOUNT	DRUM ROLLER (LONG)	2	

2. COMPLETE FRAME / TRAVERSE / SHIELDS SECTION

NO.	PART NO.	KEYWORD	DESCRIPTION	NO. REQ'D
26	5212	IDLER	CHAIN,WITH BEARING	4
27	6939	TIGHTENER	IDLER SPRING	2
28	6947	MOUNT	REEL BEARING	1
29	6948	BRACE	PLUMBING	2
30	121103	WASHER	THRUST	1
31	2282	SNAP RING	5-1/2" ID.	1
32	8608	BEARING	SEAL; HOUSING ASSEMBLY	1
33	3048	BEARING	2-15/16" PILLOW BLOCK	1
---	3083	INSERT	2-15/16" REPLACEMENT BEARING	1
---	3084	COLLAR	2-15/16" ECCENTRIC LOCKING	1
34	5209	IDLER	4" CHAIN,WITH TIRE	1
35	121107	SHIELD	SMALL TURBINE	1
36	121113	SHIELD	CHAIN,RIGHT	1
---	121307	SHIELD	CHAIN, UPPER RIGHT SECTION	1
---	121308	SHIELD	CHAIN,LOWER RIGHT SECTION	1
37	2326	BUSHING	TRAVERSE	1
38	60153	INDICATOR	HOSE OUT--PER FOOT	1
39	4262-233	CHAIN	NO.50,231 PITCHES+CONN.+OFFSET	1
---	4262	CHAIN	NO.50 ROLLER;19LNK PER/FT	A/R
---	4262A	LINK	NO.50 CONNECTING	A/R
---	4262B	LINK	OFFSET	A/R
40	51041	SPROCKET	50B17 WITH 1-7/16" BORE	1
41	51022	SPROCKET	50B25 WITH 1" BORE (FOR RR3450)	1
---	51042	SPROCKET	50B22 WITH 1" BORE (FOR RR3500)	1
42	121112	GUARD	CHAIN SHIELD;LEFT	1
43	121111	COVER	CHAIN SHIELD;LEFT	1
44	121109	SHIELD	LEFT; REAR SECTION	1
45	121110	SHIELD	LEFT; FRONT SECTION	1

2. COMPLETE FRAME / TRAVERSE / SHIELDS SECTION

NO.	PART NO.	KEYWORD	DESCRIPTION	NO.	REQ'D
46	121108	COVER	SHIELD;LEFT	1	
47	7024	HOOK	SPRING LOADED ATTACHING	6	
48	121114	GUARD	DIAGONAL SHIELD;RIGHT	1	
49	121116	SHIELD	RIGHT; FRONT SECTION	1	
50	121115	SHIELD	RIGHT; LOWER SECTION	1	
51	121105	SHIELD	REEL CHAIN;RIGHT	1	
52	121104	SHIELD	REEL CHAIN;LEFT	1	
53	2020	NUT	IDLER ADJUSTING	1	
54	121323	SHIELD	RIGHT SIDE	1	
55	121324	SHIELD	LEFT SIDE	1	
56	1444	U-BOLT	3-1/8 WIDE X 3-5/8 LONG X 1/4 CR RD. ...	3	
57	1445	U-BOLT	6-1/2 WIDE X 3-3/4 LONG X 1/4 CR RD. ...	2	
58	1442	U-BOLT	4-3/4 WIDE X 3-5/8 LONG X 1/4 RD.	1	
59	5407	ROLLER	TRAVERSE; ASSEMBLY	2	



3. SHAFT AND BRAKE SECTION

NO.	PART NO.	KEYWORD	DESCRIPTION	NO. REQ'D
1	10196	SHAFT	DRIVE	1
2	10197	SHAFT	DISENGAGE	1
3	60094	ARM	BRAKE	1
4	9867	MOUNT	DRIVE IDLER,LEFT	1
5	9868	MOUNT	DRIVE IDLER,RIGHT	1
6	60102	BRACKET	SPRING MOUNT	4
7	6938	ROD	SPRING MOUNTING	2
8	7012	SPRING	TENSION	4
9	4043-79	CHAIN	NO.60, 77 PITCHES+CONN.+OFFSET	1
--	4043	CHAIN	NO.60 ROLLER,15LNK PER/FT	A/R
--	4043A	LINK	NO.60 CONNECTING	A/R
--	4043B	LINK	NO.60 OFFSET	A/R
10	51040	SPROCKET	CHAIN IDLER, 80B12H	2
11	G131017	WASHER	3/4 SAE FLAT	A/R
12	5209	IDLER	4" CHAIN,WITH TIRE	1
13	2020	NUT	5/8" UNC,IDLER	1
14	8598	BRAKE	MECHANICAL CALIPER	1
--	8598A	PAD	MECHANICAL CALIPER BRAKE, (NOT SHOWN) ..	A/R
15	51025	SPROCKET	60B60 WITH 2-3/16" BORE	1
16	9863	FLAT	BEARING IDLER	4
17	3108	FLANGETTE	100 MSC2 FOR 2-3/16" BEARING	8
18	3086	INSERT	2-3/16" REPLACEMENT BEARING	4
--	3087	COLLAR	2-3/16" ECCENTRIC LOCKING	4
19	3111	BEARING	2-3/16" PILLOW BLOCK	2
--	3086	INSERT	2-3/16" REPLACEMENT BEARING	2
--	3087	COLLAR	2-3/16" ECCENTRIC LOCKING	2
20	51033	SPROCKET	80Q14 W/Q1 2-3/16 BUSHING	2
--	5688	SPROCKET	80Q14	A/R

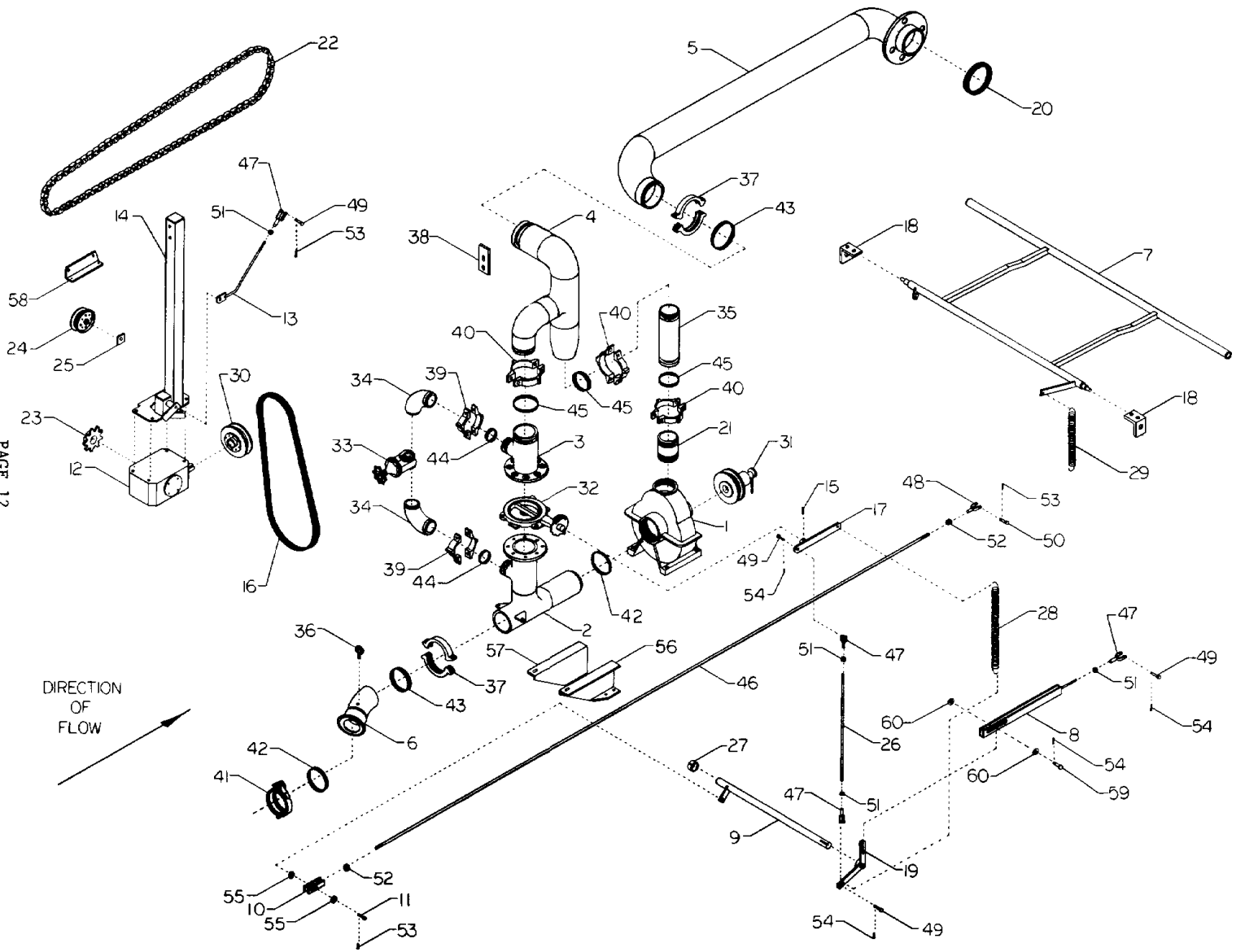
3. SHAFT AND BRAKE SECTION

NO.	PART NO.	KEYWORD	DESCRIPTION	NO. REQ'D
--	5691	BUSHING	Q1 - 2-3/16	A/R
21	S5538	DISC	BRAKE ASSEMBLY, WITH HUB	1
22	3011	BEARING	1-7/16" PILLOW BLOCK	2
--	3098	INSERT	1-7/16" REPLACEMENT BEARING	2
--	3080	COLLAR	1-7/16" ECCENTRIC LOCKING	2
23	51027	SPROCKET	60B13, WITH 1-7/16" BORE	1
24	5535	CLUTCH	DISENGAGE	1
25	51030	SPROCKET	DISENGAGE	1
26	6936	COLLAR	DISENGAGE	1
27	11096	SPLINE	1-3/8", MALE ROUND-ADAPTOR	1
28	1398	PIN	DISENGAGE	1
29	7629	SPRING	HANDLE, SELECT-A-SPRING #155	1
30	2244	PIN	ROLL 1/4X2-1/2	1
31	6971	ANGLE	BRAKE SUPPORT, RIGHT	1
32	6346	HOOK	SPRING	1
33	7626	SPRING	BRAKE, SELECT-A-SPRING #194	1
34	2234	PIN	1/8 X 1-1/4 COTTER	2
35	2042	PIN	3/8 X 1-1/4 CLEVIS	2
36	2041	CLEVIS	3/8 SAE	2
37	G120369	NUT	3/8-24 SAE	2
38	6942	ROD	CLEVIS CONNECTING	1
39	2007	PIN	5/16 X 2 ROLL	1
40	S6991	ASSEMBLY	HOSE REEL CRANK HANDLE	1
41	6574	GRIP	HANDLE	1
42	2050	PIN	UNIVERSAL DRIVE LOCKING	1
43	G120377	NUT	3/8-16 USS	1
44	G189305	SCREW	3/8-16 X 3-1/2 USS CAP	1
45	6991	HANDLE	HOSE REEL	1

3. SHAFT AND BRAKE SECTION

NO.	PART NO.	KEYWORD	DESCRIPTION	NO. REQ'D
46	8600	BRACKET	BRAKE MOUNTING	1
47	11106	PTO	IRR., WITH PLASTIC SHIELD	1
48	6955	FLAT	BEARING MOUNTING	2
49	90039	MOUNT	BEARING	1
50	3014	BEARING	1-11/16 PILLOW BLOCK	1
--	3099	INSERT	1-11/16 REPLACEMENT BEARING	1
--	3029	COLLAR	1-11/16 ECCENTRIC LOCKING	1

DIRECTION OF FLOW
→



4. PLUMBING SECTION

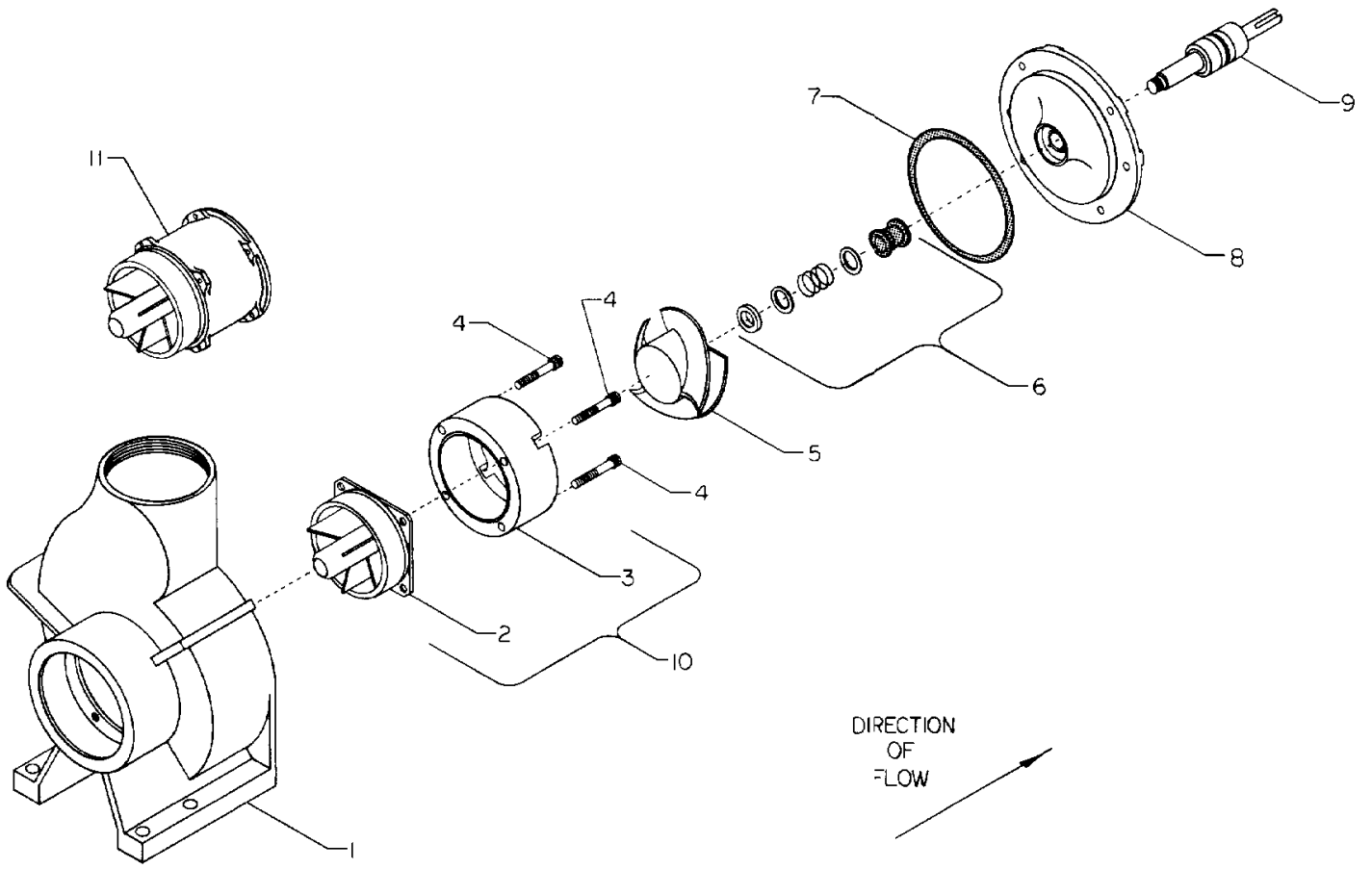
NO.	PART NO.	KEYWORD	DESCRIPTION	NO. REQ'D
1	11093	TURBINE	1/2 HP WATER	1
2	2346	PLUMBING	LOWER BYPASS; 5"	1
3	2347	PLUMBING	UPPER BYPASS; 5"	1
4	2353	PLUMBING	" Y " BYPASS; 5"	1
5	2330	PLUMBING	REEL INLET; 5"	1
6	2348	PLUMBING	INLET SWIVEL; 5"	1
7	60091	COMPENSATR	REEL SPEED	1
8	6943	MOUNT	REEL SENSOR	1
9	6944	ROD	BYPASS CONTROL	1
10	6200	CLEVIS	CONTROL ROD	1
11	1008	PIN	3/8 X 1-5/8 CLEVIS	1
12	11098	GEARBOX	30-1, 1 HP BOSTON	1
13	6783	ROD	BRAKE ADJUSTING	1
14	6978	BRACE	PLUMBING	1
15	2007	PIN	5/16 X 2 ROLL	1
16	4363	BELT	HI-LO	1
17	6977	ARM	VALVE ADJUSTING	1
18	9874	ANGLE	SENSOR MOUNTING	2
19	6973	ARM	SPEED STOP	1
20	4370	SEAL	5" ROTARY; NEOPRENE	1
21	2305	NIPPLE	4" THREADED PIPE	1
22	4043-98	CHAIN	NO.60, 97 PITCHES+CONN.	1
--	4043	CHAIN	NO.60 ROLLER;15LNK PER/FT	A/R
--	4043A	LINK	NO. 60 CONNECTING	A/R
23	5635	SPROCKET	60B10 W/1-1/8 BORE	OPT
--	51026	SPROCKET	60B15 W/1-1/8 BORE	OPT
--	5583	SPROCKET	60B18 W/1-1/8 BORE	OPT
--	5631	SPROCKET	60B21 W/1-1/8 BORE	OPT

4. PLUMBING SECTION

NO.	PART NO.	KEYWORD	DESCRIPTION	NO.	REQ'D
24	5209	IDLER	4" CHAIN, WITH TIRE	1	
25	2020	NUT	5/8 UNC IDLER	1	
26	1427	ROD	SPEED-STOP	1	
27	6205	COLLAR	3/4" ID. X 1-7/16" OD. X 3/4" LONG	1	
28	7013	SPRING	TENSION	1	
29	7019	SPRING	AUTO ADJUSTING ARM	1	
30	5534	SHEAVE	3/4" BORE, HI-LO	1	
31	5533	SHEAVE	5/8" BORE, HI-LO	1	
32	2302	VALVE	4" BUTTERFLY, W/STAINLESS STEEL ROLL PIN	1	
33	2301	VALVE	2-1/2" THREADED GATE	1	
34	2290	ELBOW	2-1/2" 90 DEGREE ADAPTOR VICTAULIC	2	
35	2354	PIPE	TURBINE DISCHARGE VERTICAL	1	
36	8626	GAUGE	NELSON 200 PSI PRESSURE	1	
37	2292	COUPLING	5" ID. VICTAULIC STYLE 75	2	
38	2459	CONNECTOR	PLUMBING SUPPORT	1	
39	2293	COUPLING	2-1/2" VICTAULIC STYLE 75	2	
40	2294	COUPLING	4" VICTAULIC STYLE 75	3	
41	2332-4	CLAMP	PIERCE 5" QUICK DISCONNECT	1	
42	2332-3	GASKET	PIERCE 5" QUICK DISCONNECT	2	
43	4377	GASKET	5" VICATAULIC, STYLE 75, 77, 78	2	
44	4383	GASKET	2-1/2" VICTAULIC, STYLE 75, 77, 78	2	
45	4378	GASKET	4" VICTAULIC, STYLE 75, 77, 78	3	
46	10176	ROD	SHUT-OFF ACTUATOR	1	
47	2041	CLEVIS	3/8 SAE	4	
48	2333	CLEVIS	1/2 X 3-1/2 LONG SAE	1	
49	2042	FIN	3/8 X 1-1/4 CLEVIS	4	
50	2109	FIN	1/2 X 1-1/2 CLEVIS	1	

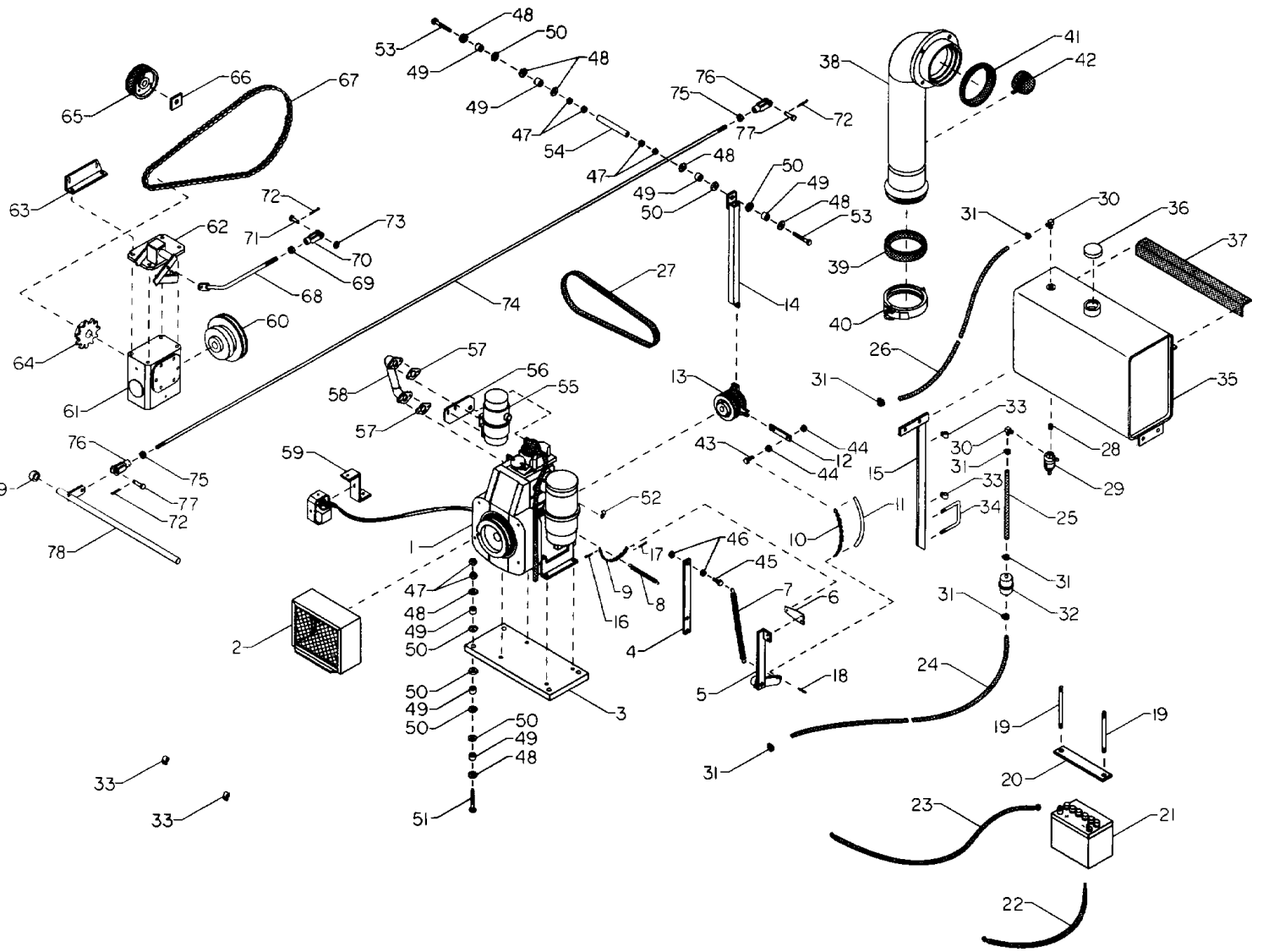
4. PLUMBING SECTION

NO.	PART NO.	KEYWORD	DESCRIPTION	NO. REQ'D
51	G120369	NUT	3/8-24 SAE	4
52	G124934	NUT	1/2-20 SAE	2
53	2198	PIN	1/8 X 1-1/2 COTTER	3
54	2234	PIN	1/8 X 1-1/4 COTTER	4
55	G120396	WASHER	1/2 SAE FLAT	2
56	9999	BRACKET	INLET PLUMBING;LT.	1
57	9998	BRACKET	INLET PLUMBING;RIGHT	1
58	121400	BRACKET	SHIELD	1
59	2365	PIN	3/8X1-1/2 CLEVIS	1
60	G120394	WASHER	3/8 FLAT	2



5. WATER TURBINE SECTION

NO.	PART NO.	KEYWORD	DESCRIPTION	NO. REQ'D
1	11093	TURBINE	1/2 HP WATER	1
--	11093A	HOUSING	1/2 HP WATER TURBINE	A/R
2	8630	FIN	INLET	1
3	8631	HOUSING	IMPELLER	1
4	8633	SCREW	1/4-20X2-1/2 (USE WITH 8630 & 8631)	4
--	8837	SCREW	1/4-20X3/4 (USE WITH 8798)	4
5	11093B	IMPELLER	ALUMINUM 2-1/4" CD., 300 GPM TO 650 GPM	A/R
--	11116	IMPELLER	2-1/4 HUB DIA., SPECIAL HIGH CLEARANCE	OPT
--	11101	IMPELLER	TURBINE 3" CD., LESS THAN 300 GPM	A/R
--	11117	IMPELLER	3 HUB DIA., SPECIAL HIGH CLEARANCE	OPT
--	11093C	IMPELLER	1-1/2" HUB DIA., GREATER THAN 650 GPM	A/R
--	11115	IMPELLER	1-1/2 HUB DIA., SPECIAL HIGH CLEARANCE	OPT
6	8624	ASSEMBLY	3/4" MECHANICAL SHAFT SEAL	1
7	4384	RING	"0"	1
8	8632	HOUSING	REAR TURBINE BEARING	1
9	8625	ASSEMBLY	SHAFT AND BEARING	1
10	8798	BOWL	L-5299 TURBINE.....(TWO-PIECE)	1
11	8798	BOWL	L-5299 TURBINE.....(ONE-PIECE)	1



6. DIESEL ENGINE SECTION

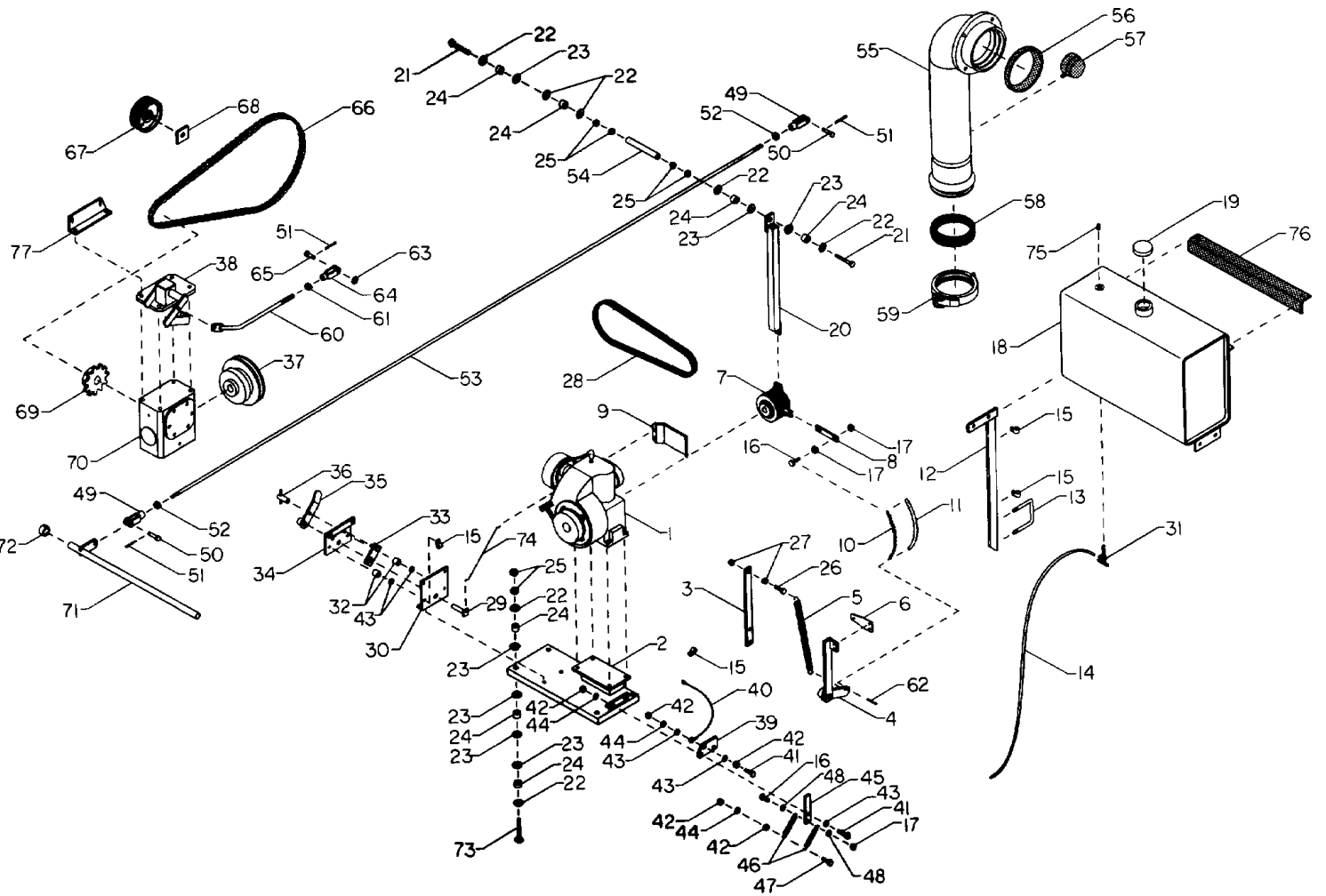
NO.	PART NO.	KEYWORD	DESCRIPTION	NO. REQ'D
1	8803	ENGINE	4HP LOMBARDINI DIESEL	1
2	121321	SHIELD	ENGINE FRONT	1
3	9996	MDUNT	MOTOR	1
4	60150	MDUNT	SPRING	1
5	60147	ARM	CLUTCH SHUT-OFF	1
6	7046	SPRING	TAPERED FLAT	1
7	7019	SPRING	AUTO ADJUSTING ARM	1
8	7638	SPRING	#187 SELECT-A-SPRING	1
9	4292-9	CHAIN	NO.35 SASH, 9 LINKS	1
10	4292-27	CHAIN	NO.35 SASH, 27 LINKS	1
11	14543	HOSE	3/8"ID CLEAR PLASTIC, 15"LONG	1
12	121319	ARM	CLUTCH DISENGAGE	1
13	11103	CLUTCH	DISC; 1" BORE	1
--	11103A	KIT	CLUTCH REBUILD	A/R
--	11103B	CAM	CLUTCH	A/R
--	11103C	CAM	CLUTCH W/7/16 HOLE	A/R
14	60151	ARM	CLUTCH RESTRAINING	1
15	90042	BRACKET	FUEL TANK SUPPORT	1
16	2234	PIN	1/8X1-1/4 COTTER	1
17	2235	PIN	5/32X1 COTTER	1
18	2214	PIN	1/8X3/4 COTTER	1
19	60149	ROD	BATTERY STRAP	2
20	60148	STRAP	BATTERY	1
21	15266	BATTERY	12 VOLTS;5"WIDEX7-3/8"LONGX6"HIGH	1
22	15264	CABLE	BATTERY; 24"X4GA. W/BRASS TERMINAL	1
23	15265	CABLE	BATTERY; 40"X4GA. W/BRASS TERMINAL	1
24	14542-48	HOSE	1/4"ID FUEL LINE;48"LONG (SUPPLY)	1
25	14542-12	HOSE	1/4"ID FUEL LINE;12"LONG	1
26	14542-80	HOSE	1/4"ID FUEL LINE;80"LONG (RETURN)	1
27	5L430	BELT	"V"	1
28	2484	NIPPLE	1/8" CLOSE	1
29	8831	FILTER	FUEL W/SEDIMENT BOWL	1
30	2485	ELBOW	1/8NPT X 1/4ID HOSE;BRASS	2
31	2363	CLAMP	1/4ID ADJ. HOSE	6
32	8832	FILTER	FUEL; IN-LINE	1
33	2128	CLIP	1/2 BLACK VINYL WIRE & LOOM	14
34	1443	U-BOLT	SHIELD, 4-1/8" INSIDE	1
35	8828	TANK	FUEL; 13 GAL. RECTANGULAR	1
36	8828A	CAP	FUEL TANK	1
37	4413	STRIP	FUEL TANK ISOLATOR	1
38	2482	PLUMBING	VERTICAL INLET;5"	1
39	2332-3	GASKET	PIERCE 5" QUICK DISCONNECT	1
40	2332-4	CLAMP	PIERCE 5" QUICK DISCONNECT;W/O GASKET ..	1
41	4370	SEAL	5" ROTARY; NEOPRENE	1
42	8626	GAUGE	NELSON,0 TO 200 PSI	1
43	G120910	SCREW	10-24X3/4 ROUND HEAD MACHINE	1
44	G116003	NUT	10-24 USS	A/R
45	G180081	SCREW	5/16-18X1-1/4 USS CAP	1
46	G120376	NUT	5/16-18 USS	A/R
47	G120377	NUT	3/8-16 USS	12
48	2053	RETAINER	RUBBER GROMMET	13
49	4076	BUSHING	RUBBER	16
50	2052	LOCATOR	RUBBER GROMMET	19
51	G189305	SCREW	3/8-16X3-1/2 USS CAP	4
52	2466	CLIP	5/8 BLACK VINYL W5/16HOLE	1
53	G180134	SCREW	3/8-16X2-1/2 USS CAP	2

6. DIESEL ENGINE SECTION

NO.	PART NO.	KEYWORD	DESCRIPTION	NO. REQ'D
54	2158	ROD	RESTRAINING ARM SPACER	1
55	8820	MUFFLER	LOMBARDINI DIESEL	1
56	121339	SUPPORT	MUFFLER	1
57	8829	GASKET	MUFFLER TO ENGINE	2
58	8819	PIPE	ENGINE OFFSET EXHAUST	1
59	121317	MOUNT	STARTER SWITCH	1
60	5566	SHEAVE	HI-LO,66TBR,TYPE416SS,3/4	1
61	11098	GEARBOX	1 HP, 30:1	1
62	60146	MOUNT	BRAKE HANDLE	1
63	121400	BRACKET	SHIELD	1
64	5635	SPROCKET	60B10 W/1-1/8 BORE	OPT
--	51026	SPROCKET	60B15 W/1-1/8 BORE	OPT
--	5583	SPROCKET	60B18 W/1-1/8 BORE	OPT
--	5631	SPROCKET	60B21 W/1-1/8 BORE	OPT
65	5209	IDLER	4" CHAIN W/TIRE	1
66	2020	NUT	5/8 UNC, 2X1-3/4X3/8	1
67	4043-98	CHAIN	NO.60, 97 PITCHES+CONN.	1
--	4043	CHAIN	NO.60 ROLLER;15LNK PER/FT	A/R
--	4043A	LINK	NO. 60 CONNECTING	A/R
68	6783	ROD	BRAKE ADJUSTING	1
69	G120369	NUT	3/8-24 SAE	1
70	2041	CLEVIS	3/8 SAE	1
71	2042	PIN	3/8X1-1/4 CLEVIS	1
72	2198	PIN	1/8X1-1/2 COTTER	3
73	G120394	WASHER	3/8 FLAT	1
74	10176	ROD	SHUT-OFF ACTUATOR	1
75	G124934	NUT	1/2-20 SAE JAM	2
76	2333	CLEVIS	1/2"SAE X 3-1/2"LONG	2

6. DIESEL ENGINE SECTION

NO.	P&BI NO.	KEYWORD	DESCRIPTION	NO. REQ'D
77	2109	FIN	CLEVIS 1/2X1-1/2	2
78	6944	ROD	BY-PASS CONTROL	1
79	6205	COLLAR	3/4ID X1-7/16ODX3/4 LONG	1



7. 4HP GASOLINE ENGINE SECTION

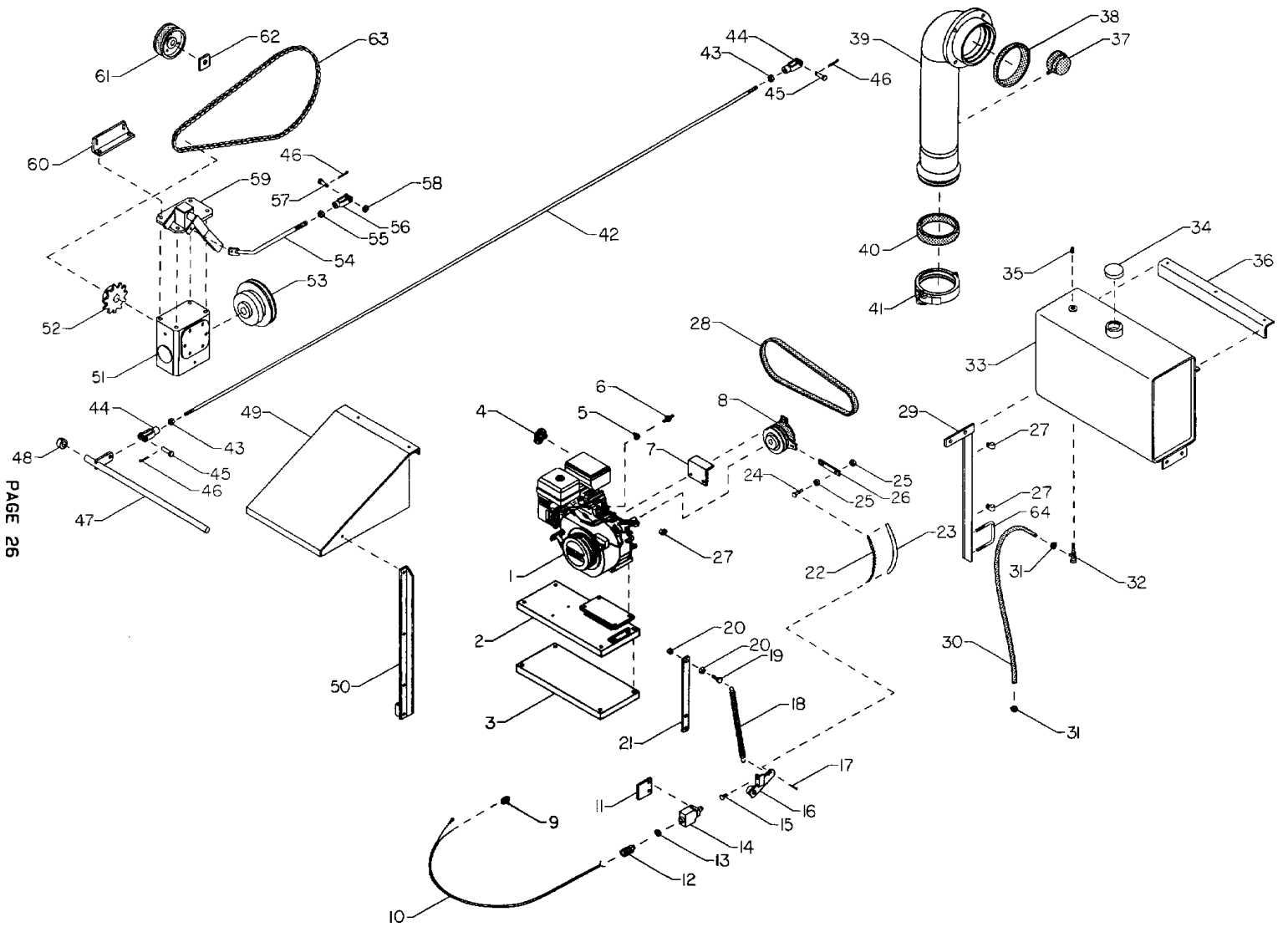
NO.	PART NO.	KEYWORD	DESCRIPTION	NO. REQ'D
1	8802	ENGINE	4HP KOHLER GASOLINE	1
2	90043	MOUNT	MOTOR	1
3	60150	MOUNT	SPRING	1
4	60147	ARM	CLUTCH SHUT-OFF	1
5	7019	SPRING	AUTO ADJUSTING ARM	1
6	7046	SPRING	TAPERED FLAT	1
7	11104	CLUTCH	DISC, 3/4" BORE	1
---	11103A	KIT	CLUTCH REBUILD	A/R
---	11103B	CAM	CLUTCH	A/R
---	11103C	CAM	CLUTCH W/7/16 HOLE	A/R
8	121319	ARM	CLUTCH DISENGAGE	1
9	121384	DEFLECTOR	EXHAUST	1
10	4292-27	CHAIN	NO.35 SASH, 27 LINKS	1
11	14543	HOSE	3/8"ID CLEAR PLASTIC,15"LONG	1
12	90042	BRACKET	FUEL TANK SUPPORT	1
13	1443	U-BOLT	SHIELD, 4-1/8" INSIDE	1
14	14542-54	HOSE	1/4"ID FUEL LINE, 54"LONG	1
15	2128	CLIP	1/2"BLACK VINYL WIRE & LOOM	4
16	G120910	SCREW	10-24X3/4 ROUND HEAD MACHINE	2
17	G116003	NUT	10-24 USS	3
18	8828	TANK	FUEL; 13 GAL. RECTANGULAR	1
19	8828A	CAP	FUEL TANK	1
20	60151	ARM	CLUTCH RESTRAINING	1
21	G180134	SCREW	3/8-16X2-1/2 USS CAP	2
22	2053	RETAINER	RUBBER GROMMET	13
23	2052	LOCATOR	RUBBER GROMMET	19
24	4076	BUSHING	RUBBER 9/16X1 DIA	16
25	G120377	NUT	3/8-16 USS	12

7. 4HP GASOLINE ENGINE SECTION

NO.	PART NO.	KEYWORD	DESCRIPTION	NO. REQ'D
26	G180081	SCREW	5/16-18X1-1/4 USS CAP	A/R
27	G120376	NUT	5/16-18 USS	A/R
28	B44	BELT	V	1
29	60170	SHAFT	THROTTLE CONTROL	1
30	90044	PLATE	THROTTLE MOUNT	1
31	8802A	VALVE	TANK OUTLET STRAINER	1
32	2085	SPACER	1/4IDXSCH40X3/4 LONG	2
33	6112	TIGHTENER	AIR VALVE ADJUSTING HANDLE	1
34	12029	PLATE	BUTTERFLY ADJUSTING	1
35	6111	HANDLE	ADJUSTING	1
36	2083	HANDLE	TIGHTENING	1
37	5566	SHEAVE	HI-LO,66TBR,TYPE416SS,3/4	1
38	60146	MOUNT	BRAKE HANDLE	1
39	13323	MOUNT	CUT-OFF LEVER	1
40	15276	WIRE	ENGINE GROUND	1
41	G180024	SCREW	1/4-20X1-1/4 USS CAP	A/R
42	G120375	NUT	1/4-20 USS	A/R
43	G120392	WASHER	1/4 FLAT	A/R
44	G120380	LOCKWASHER	1/4	A/R
45	60171	LEVER	ENGINE SHUT-OFF	1
46	7048	SPRING	#192 SELECT-A-SPRING	2
47	G180034	SCREW	1/4-20X1-1/2 USS CAP	A/R
48	G120385	WASHER	3/16 FLAT	2
49	2333	CLEVIS	1/2"SAE X 3-1/2"LONG	2
50	2109	PIN	CLEVIS 1/2X1-1/2	2
51	2198	PIN	1/8X1-1/2 COTTER	3
52	G124934	NUT	1/2-20 SAE JAM	2
53	10176	ROD	SHUT-OFF ACTUATOR	1
54	2158	ROD	RESTRAINING ARM SPACER	1

7. 4HP GASOLINE ENGINE SECTION

NO.	PART NO.	KEYWORD	DESCRIPTION	NO.	REQ'D
55	2482	PLUMBING	VERTICAL INLET, 5"	1	
56	4370	SEAL	5" ROTARY; NEOPRENE	1	
57	8626	GAUGE	NELSON, 0 TO 200 PSI	1	
58	2332-3	GASKET	PIERCE 5" QUICK DISCONNECT	1	
59	2332-4	CLAMP	PIERCE 5" QUICK DISCONNECT W/O GASKET ..	1	
60	6783	ROD	BRAKE ADJUSTING	1	
61	G120369	NUT	3/8-24 SAE	1	
62	2214	PIN	1/8X3/4 COTTER	1	
63	G120394	WASHER	3/8 FLAT	1	
64	2041	CLEVIS	3/8 SAE	1	
65	2042	PIN	3/8X1-1/4 CLEVIS	1	
66	4043-98	CHAIN	NO.60, 97 PITCHES+CONN.	1	
--	4043	CHAIN	NO.60 ROLLER, 15LNK PER/FT	A/R	
--	4043A	LINK	NO. 60 CONNECTING	A/R	
67	5209	IDLER	4 CHAIN W/ TIRE	1	
68	2020	NUT	5/8 UNC, 2X1-3/4X3/8	1	
69	5635	SPROCKET	60B10 W/1-1/8 BORE	OPT	
--	51026	SPROCKET	60B15 W/1-1/8 BORE	OPT	
--	5583	SPROCKET	60B18 W/1-1/8 BORE	OPT	
--	5631	SPROCKET	60B21 W/1-1/8 BORE	OPT	
70	11098	GEARBOX	30:1, 1 HP	1	
71	6944	ROD	BY-PASS CONTROL	1	
72	6205	COLLAR	3/4ID X1-7/16ODX3/4 LONG	1	
73	G189305	SCREW	3/8-16X3-1/2 USS CAP	4	
74	60176	LINKAGE	THROTTLE	1	
75	2487	PLUG	1/8" PIPE	1	
76	4413	STRIP	FUEL TANK ISOLATOR	1	
77	121400	BRACKET	SHIELD	1	



8. 5HP GASOLINE ENGINE SECTION

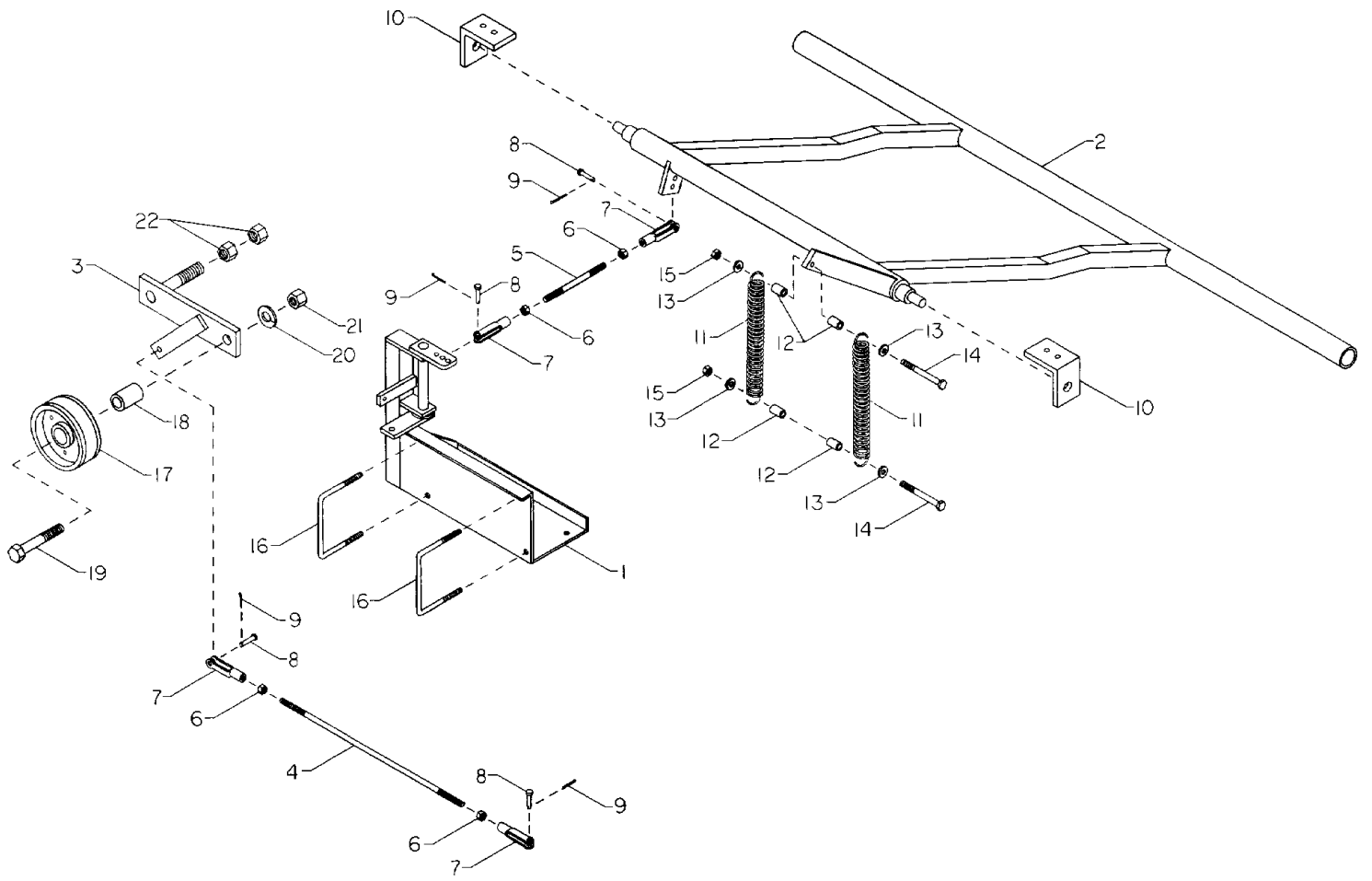
NO.	PART NO.	KEYWORD	DESCRIPTION	NO. REQ'D
1	8999	ENGINE	5HP HONDA	1
2	90043	MOUNT	MOTOR	1
3	90479	SPACER	MOTOR MOUNT	1
4	8126	DEFLECTOR	EXHAUST (HONDA 5HP)	1
5	8127	CLAMP	3/16 ID HOSE	1
6	8125	FILTER	IN-LINE FUEL (HONDA 5HP)	1
7	121803	MOUNT	CLUTCH	1
8	11104	CLUTCH	DISC; 3/4" BORE	1
--	11103A	KIT	CLUTCH REBUILD	A/R
---	11103B	CAM	CLUTCH	A/R
----	11103C	CAM	CLUTCH W/7/16 HOLE	A/R
9	15448	CONNECTOR	SELF-STRIP, ELEC.; 14-18	1
10	15232-20	WIRE	18/3 20" LONG	1
---	15425	TERMINAL	16-14, 3/8 STUD RING, INSULATED	1
11	90306	SPACER	SWITCH	1
12	15431	RELIEF	1/2 STRAIGHT HUBBEL STRAIN	1
13	15405	RING	1/2" LIQUID TIGHT SEALING	1
14	15421	SWITCH	LIMIT;WITH PUSH ROD	1
15	1036	BOLT	1/4-20X1 ELEVATOR	1
16	60380	ARM	CLUTCH SHUT-OFF;SHORT	1
17	2214	PIN	1/8X3/4 COTTER	1
18	7019	SPRING	AUTO ADJUSTING ARM	1
19	G180081	SCREW	5/16-18X1-1/4 USS CAP	A/R
20	G120376	NUT	5/16-18 USS	A/R
21	60150	MOUNT	SPRING	1
22	4292-29	CHAIN	NO.35 SASH; 29 LINKS	1
23	14543	HOSE	3/8" ID CLEAR PLASTIC	1
24	G120910	SCREW	10-24X3/4 ROUND HEAD MACHINE	A/R

8. 5HP GASOLINE ENGINE SECTION

NO.	PART NO.	KEYWORD	DESCRIPTION	NO. REQ'D
25	G116003	NUT	10-24 USS	A/R
26	121319	ARM	CLUTCH DISENGAGE	1
27	2128	CLIP	1/2" BLACK VINYL WIRE & LOOM	3
28	B45	BELT	B45 V-BELT	1
29	90042	BRACKET	FUEL TANK SUPPORT	1
30	14542	HOSE	1/4" ID FUEL LINE	A/R
31	2363	CLAMP	ADJ.; 1/4 ID HOSE	2
32	8802A	VALVE	TANK OUTLET STRAINER	1
33	8828	TANK	FUEL; 13 GAL. RECTANGULAR	1
34	8828A	CAP	FUEL TANK	1
35	2487	PLUG	1/8" PIPE	1
36	4413	STRIP	FUEL TANK ISOLATOR	1
37	8626	GAUGE	NELSON, 0 TO 200 PSI	1
38	4370	SEAL	5" ROTARY; NEOPRENE	1
39	2482	PLUMBING	VERTICAL INLET; 5"	1
40	2332-3	GASKET	PIERCE 5" QUICK DISCONNCT	1
41	2332-4	CLAMP	PIERCE 5" QD., W/O GASKET	1
42	10176	ROD	SHUT-OFF ACTUATOR	1
43	G124934	NUT	1/2-20 SAE JAM	2
44	2333	CLEVIS	1/2"SAE X 3-1/2"LONG	2
45	2109	PIN	CLEVIS 1/2X1-1/2	2
46	2198	PIN	1/8X1-1/2 COTTER	3
47	6944	ROD	BY-PASS CONTROL	1
48	6205	COLLAR	3/4ID X1-7/16ODX3/4 LONG	1
49	121641	SHIELD	WEATHER	1
50	90301	SUPPORT	WEATHER SHIELD	1
51	11098	GEARBOX	30-1, 1 HP BOSTON	1
52	51026	SPROCKET	60B15, F1-1/8, 2 SETSCREWS	1

8. 5HP GASOLINE ENGINE SECTION

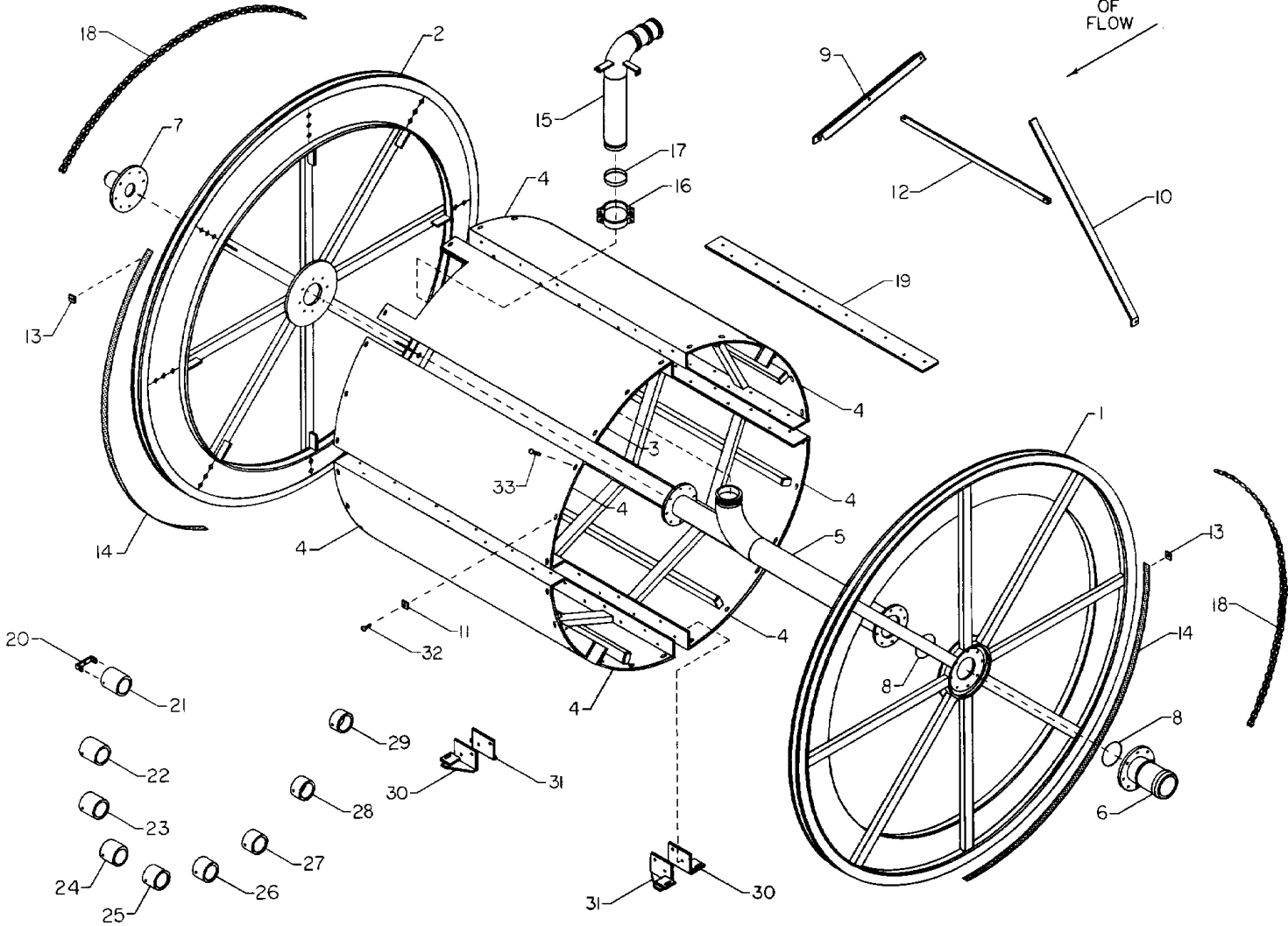
NO.	PART NO.	KEYWORD	DESCRIPTION	NO.	REQ'D
53	5566	SHEAVE	HI-LO,66TBR,TYPE416SS,3/4	1	
54	6783	ROD	BRAKE ADJUSTING	1	
55	G120369	NUT	3/8-24 SAE	A/R	
56	2041	CLEVIS	3/8 SAE	1	
57	2042	PIN	3/8X1-1/4 CLEVIS	1	
58	G120394	WASHER	3/8 FLAT	1	
59	60374	MOUNT	BRAKE HANDLE	1	
60	121400	BRACKET	SHIELD	1	
61	5209	IDLER	4 CHAIN W/ TIRE	1	
62	2020	NUT	ADJUSTING	1	
63	4043-98	CHAIN	NO.60, 97 PITCHES+CONN.	1	
---	4043	CHAIN	NO.60 ROLLER,15LNK PER/FT	A/R	
---	4043A	LINK	NO. 60 CONNECTING	A/R	
64	1443	U-BOLT	SHIELD, 4-1/8" INSIDE	1	



9. ENGINE DRIVE REEL COMPENSATOR

NO.	PART NO.	KEYWORD	DESCRIPTION	NO. REQ'D
1	90004	MOUNT	BATTERY	1
2	60091	COMPENSATR	REEL SPEED (RR3000)	1
3	90014	ARM	COMPENSATOR IDLER	1
4	1441	ROD	COMPENSATOR, LONG	1
5	6942	ROD	CLEVIS CONNECTING	1
6	G120369	NUT	3/8-24 SAE	4
7	2041	CLEVIS	3/8 SAE	4
8	2042	PIN	3/8X1-1/4 CLEVIS	4
9	2234	PIN	1/8X1-1/4 COTTER	4
10	9874	MOUNT	COMPENSATOR	2
11	7019	SPRING	AUTO ADJUSTING ARM	2
12	2216	SPACER	3/8 SCH 80 PIPE X 3/4	4
13	G120394	WASHER	3/8 FLAT	4
14	G189305	SCREW	3/8-16X3-1/2 USS CAP	2
15	G120377	NUT	3/8-16 USS	2
16	1443	U-BOLT	SHIELD, 4-1/8" INSIDE	2
17	5209	IDLER	4 CHAIN W/ TIRE	1
18	2465	SPACER	21/32IDX1-3/16ODX1-3/4LG	1
19	G271731	SCREW	5/8-11X4 USS CAP	1
20	G121574	LOCKWASHER	5/8	1
21	G124589	NUT	5/8-11 USS	1
22	G426897	NUT	3/4 USS JAM	2

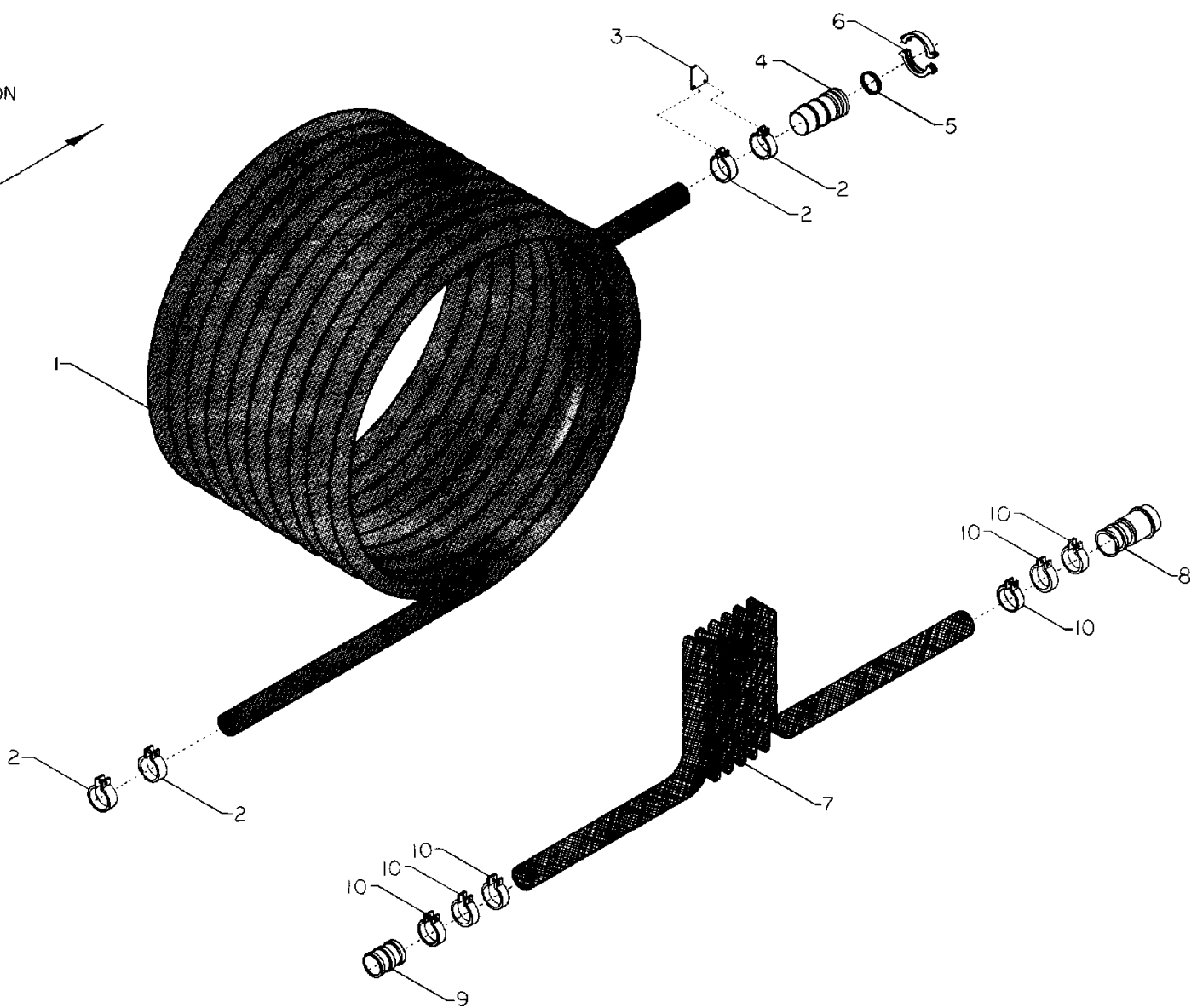
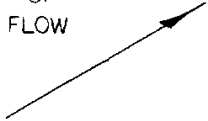
DIRECTION OF FLOW



10. DRUM REEL SECTION

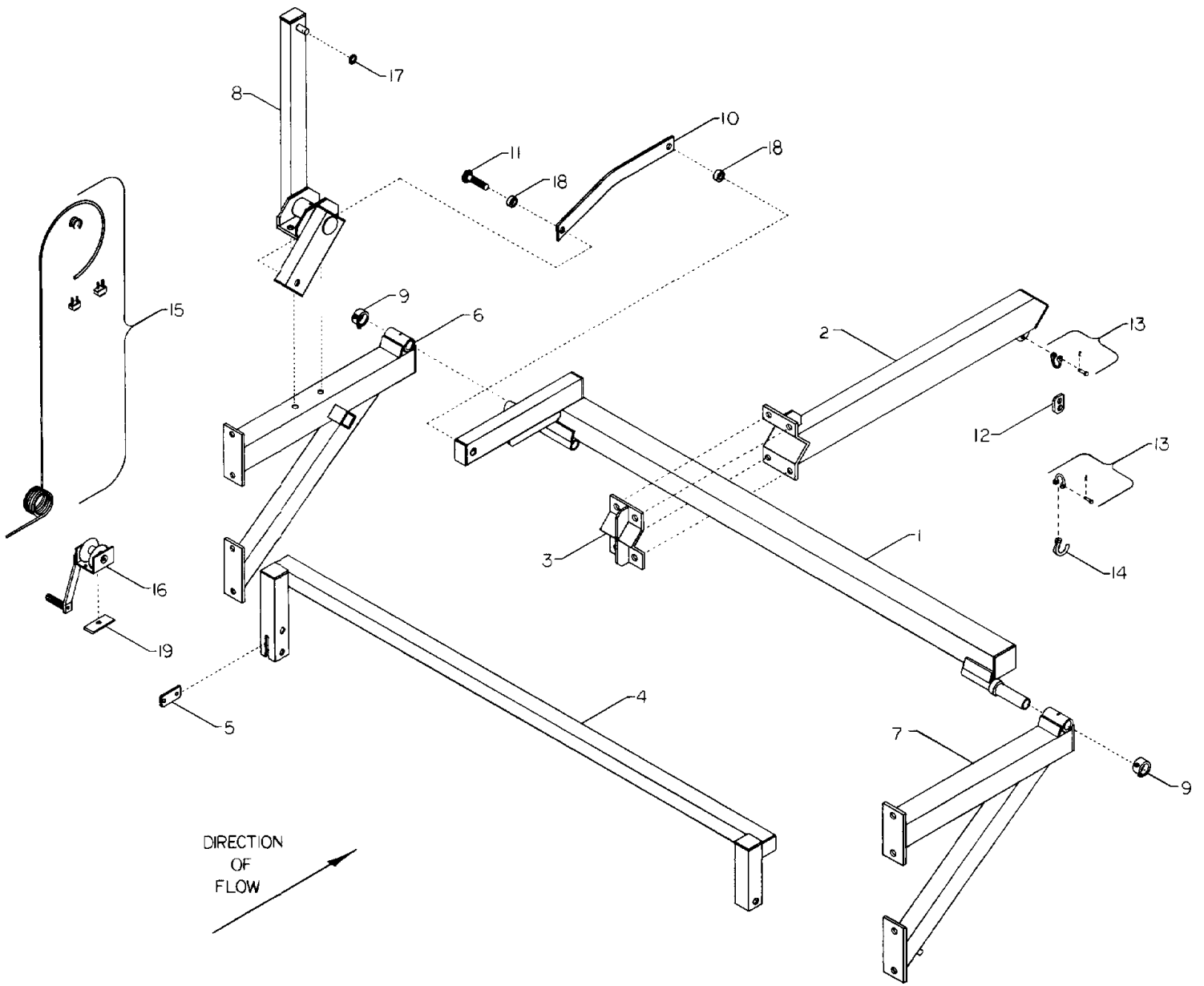
NO.	PART NO.	KEYWORD	DESCRIPTION	NO. REQ'D
1	121224	SIDE	REEL; RIGHT.....(RR3450)	1
--	121236	SIDE	REEL; RIGHT.....(RR3500)	1
2	121223	SIDE	REEL; LEFT (WITH NOTCH).....(RR3450)	1
--	121235	SIDE	REEL; LEFT (WITH NOTCH).....(RR3500)	1
3	121808	PANEL	REEL DRUM (BURN OUT SECTION)....(RR3450)	1
--	121234	PANEL	REEL DRUM (BURN OUT SECTION)....(RR3500)	1
4	121807	PANEL	REEL DRUM.....(RR3450)	7
--	121233	PANEL	REEL DRUM.....(RR3500)	7
5	2420	PLUMBING	REEL CENTER; 5"	1
6	2324	SPINDLE	INLET; 5"	1
7	10179	SPINDLE	OUTBOARD	1
8	4364	RING	"O"	2
9	121402	BRACE	DRUM; LEFT.....(RR3450)	8
--	121404	BRACE	DRUM; LEFT.....(RR3500)	8
10	121403	BRACE	DRUM; RIGHT.....(RR3450)	8
--	121405	BRACE	DRUM; RIGHT.....(RR3500)	8
11	6946	CAP	DRUM BOLT	48
12	90048	BRACE	LATERAL	8
13	121142	PLATE	BELT SUPPORTING	16
14	4375	BAND	CHAIN	2
15	2433	PLUMBING	4-1/2" ID. GOOSENECK.....(RR3450)	1
--	2446	PLUMBING	5" ID. GOOSENECK.....(RR3500)	1
16	2292	COUPLING	5" ID. VICTAULIC STYLE 75	1
17	4377	GASKET	5" VICTAULIC STYLE 75,77,78	1
18	4365-394	CHAIN	NO.80,393 PITCHES+CONN.	2
--	4365	CHAIN	NO.80 ROLLER,12/LNKS P/FT	A/R
--	4365B	LINK	NO. 80 CONNECTING	A/R
19	121809	SPACER	DRUM.....(RR3450)	8
--	7790	KIT	6 OD X 5 ID HOSE WRAP SPACER,....(RR3500) (INCLUDES ITEMS 20 THROUGH 29)	1
20	90206	BRACKET	SPACER MOUNTING	9
21	14605	SPACER	6-3/4LONG X 5ID HOSE	1
22	14606	SPACER	6-5/16LONG X 5ID HOSE	1
23	14607	SPACER	5-7/8LONG X 5ID HOSE	1
24	14608	SPACER	5-7/16LONG X 5ID HOSE	1
25	14609	SPACER	5LONG X 5ID HOSE	1
26	14610	SPACER	4-9/16LONG X 5ID HOSE	1
27	14611	SPACER	4-1/8LONG X 5ID HOSE	1
28	14612	SPACER	3-11/16LONG X 5ID HOSE	1
29	14613	SPACER	3-1/4LONG X 5ID HOSE	1
30	121122	BRACE	REEL DRUM;RIGHT	15
31	121123	BRACE	REEL DRUM;LEFT	15
32	G120917	BOLT	1/2-13 X 1-1/2 CARRIAGE; GRADE 5	15
33	G126504	BOLT	1/2-13 X 2 CARRIAGE; GRADE 5	32

DIRECTION
OF
FLOW



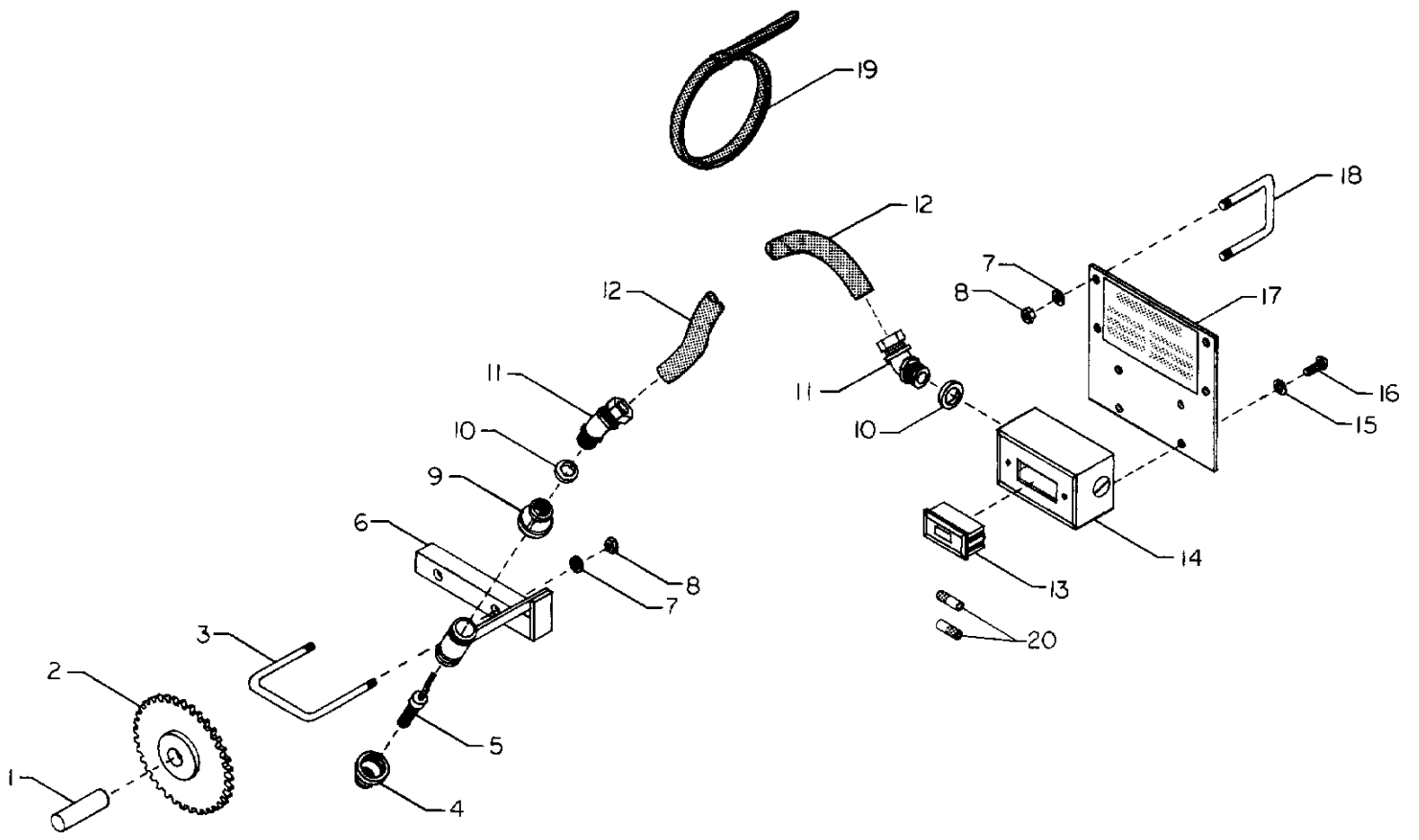
11. HOSE SECTION

NO.	PART NO.	KEYWORD	DESCRIPTION	NO. REQ'D
1	14537	HOSE	4-1/2" ID., (1,300 FT. FOR RR3450)	A/R
--	14531	HOSE	5" ID., (1,000 FT. FOR RR3500)	A/R
2	6937	CLAMP	4-1/2" ID. SOLID HOSE	4
--	2447	CLAMP	5" ID. SOLID HOSE	4
3	9872	STOP	BY-PASS HOSE; FOR ALL SIZE HOSE	1
4	2442	BEAD	4-1/2" ID. SOLID HOSE	1
--	2421	BEAD	5" ID. SOLID HOSE	1
5	4377	GASKET	5" VICTAULIC STYLE 75,77,78	1
6	2292	COUPLING	5" VICTAULIC STYLE 75	1
7	14027	HOSE	4-1/2" FLEXIBLE INFEED, BY FEET	A/R
--	14532	HOSE	5" FLEXIBLE INFEED, BY FEET	A/R
8	2424	COUPLING	5" MALE RING LOCKING	1
9	2304	BEAD	4-1/2" HOSE (4-1/2")	A/R
--	2409	COUPLING	5" MALE TWISTLOCK (4-1/2")	A/R
--	2406	COUPLING	6" MALE TWISTLOCK (4-1/2")	A/R
--	2339	COUPLING	5" MALE RINGLOCK (4-1/2")	A/R
--	2408	COUPLING	6" MALE RINGLOCK (4-1/2")	A/R
--	8787	COUPLING	4-1/2X6" FEMALE RINGLOCK	A/R
--	2415	PIPE	12" LONG X 5" OD. EXTENSION (4-1/2") . . .	A/R
--	2423	BEAD	5" HOSE (5")	A/R
--	2431	COUPLING	12" LONG X 5" OD. EXTENSION (5")	A/R
--	2427	COUPLING	5" MALE TWISTLOCK (5")	A/R
--	2428	COUPLING	6" MALE TWISTLOCK (5")	A/R
--	2424	COUPLING	5" MALE RINGLOCK (5")	A/R
--	2430	COUPLING	6" MALE RINGLOCK (5")	A/R
--	8680	COUPLING	6" FEMALE RINGLOCK (5")	A/R
10	2404	CLAMP	4-1/2" FLEXIBLE HOSE	6
--	2448	CLAMP	5" FLEXIBLE HOSE	8



12. GUN CART LIFT SECTION

NO.	PART NO.	KEYWORD	DESCRIPTION	NO. REQ'D
1	60093	BAR	GUN LIFT	1
2	6964	ARM	GUN LIFT	1
3	6965	MOUNT	LIFT ARM	1
4	60097	BAR	REEL DISENGAGE	1
5	6933	LINK	CLEVIS CONNECTING	1
6	6961	MOUNT	GUN LIFT FRAME;RIGHT	1
7	6960	MOUNT	GUN LIFT FRAME;LEFT	1
8	6966	ARM	CENTER PIVOT	1
9	6963	COLLAR	LIFT MOUNTING	2
10	6959	ARM	GUN LIFT CONNECTING	1
11	2326	SCREW	CONNECTING	1
12	60340	LINK	HOOK CONNECTING	1
13	1461	SHACKLE	5/16 ANCHOR W/KEYED PIN	2
14	8614	HOOK	GUN LIFT SAFETY	1
15	4447	CABLE	GUN LIFT ASSEMBLY	1
---	4380	CABLE	1/4" AIRCRAFT (8 FT. LONG)	1
---	2650	CLAMP	1/4" CABLE	2
---	1423	THIMBLE	1/4" WIRE ROPE	1
16	8894	WINCH	GUN LIFT (MODEL B1500)	1
17	G131017	WASHER	3/4 SAE FLAT	1
18	2356	BUSHING	MOVEABLE	2
19	9936	SUPPORT	WINCH	1



13. SPEED INDICATOR KITS

NO.	PART NO.	KEYWORD	DESCRIPTION	NO. REQ'D
1	10241	SHAFT	GEAR	1
2	5628	GEAR	96 TOOTH WITH 3/4 BORE	1
--	5629	GEAR	100 TOOTH WITH 3/4 BORE	1
3	1444	U-BOLT	SHIELD, 3-1/8" INSIDE	1
4	2684	REDUCER	PICK-UP	1
5	15409	PICKUP	MAGNETIC	1
6	60331	MOUNT	MAGNETIC PICK-UP	1
7	G120380	LOCKWASHER	1/4	6
8	G120375	NUT	1/4-20 USS	6
9	2683	REDUCER	3/4 NPT TO 1/2 NPT	1
10	15405	RING	1/2" LIQUID TIGHT SEALING	2
11	15095	CONNECTOR	3/8 45 LIQUID TIGHT	2
12	15089	CONDUIT	3/8 LIQUATITE	A/R
13	15410	READOUT	SPEED INDICATOR W/WIRE KIT	1
14	15408	BOX	WATERPROOF JUNCTION BELL	1
---	15408A	COVER	WATERPROOF BOX	1
15	G120217	LOCKWASHER	#10	4
16	G120910	SCREW	10-24X3/4 ROUND HEAD MACHINE	4
17	121526	BRACKET	MOUNT	1
--	8096	DECAL	HOSE SPEED CHART (60B10)	A/R
---	8960	DECAL	HOSE SPEED CHART (60B15)	A/R
---	8989	DECAL	HOSE SPEED CHART (60B18)	A/R
18	1460	U-BOLT	2-1/8 INSIDE	2
19	1449	STRAP	30" PLASTIC TIE	3
20	15449	BATTERY	1.5 VOLT; SIZE N	2

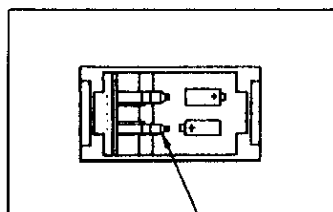
MODELS RR3400 & RR3450:

--	7820	KIT	SPEED INDICATOR; 60B10,96 TOOTH GEAR ...
--	7793	KIT	SPEED INDICATOR; 60B15,96 TOOTH GEAR ...
--	7821	KIT	SPEED INDICATOR; 60B18,96 TOOTH GEAR ...
---	7822	KIT	SPEED INDICATOR; 60B21,96 TOOTH GEAR ...

MODEL RR3500:

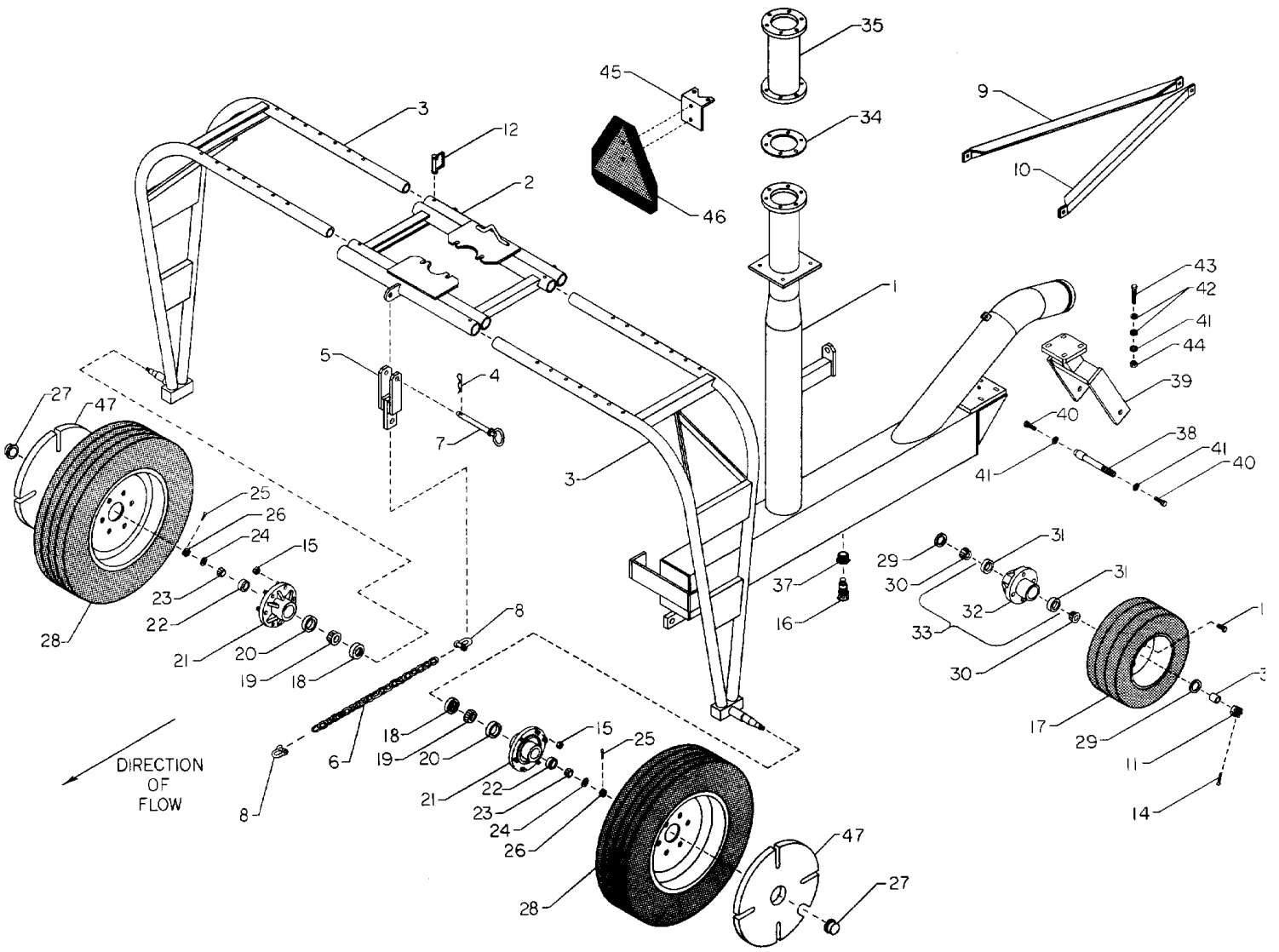
---	7823	KIT	SPEED INDICATOR; 60B10,100 TOOTH GEAR ..
---	7795	KIT	SPEED INDICATOR; 60B15,100 TOOTH GEAR ..
---	7824	KIT	SPEED INDICATOR; 60B18,100 TOOTH GEAR ..
---	7825	KIT	SPEED INDICATOR; 60B21,100 TOOTH GEAR ..

SPEED INDICATOR READ-OUT
REAR VIEW



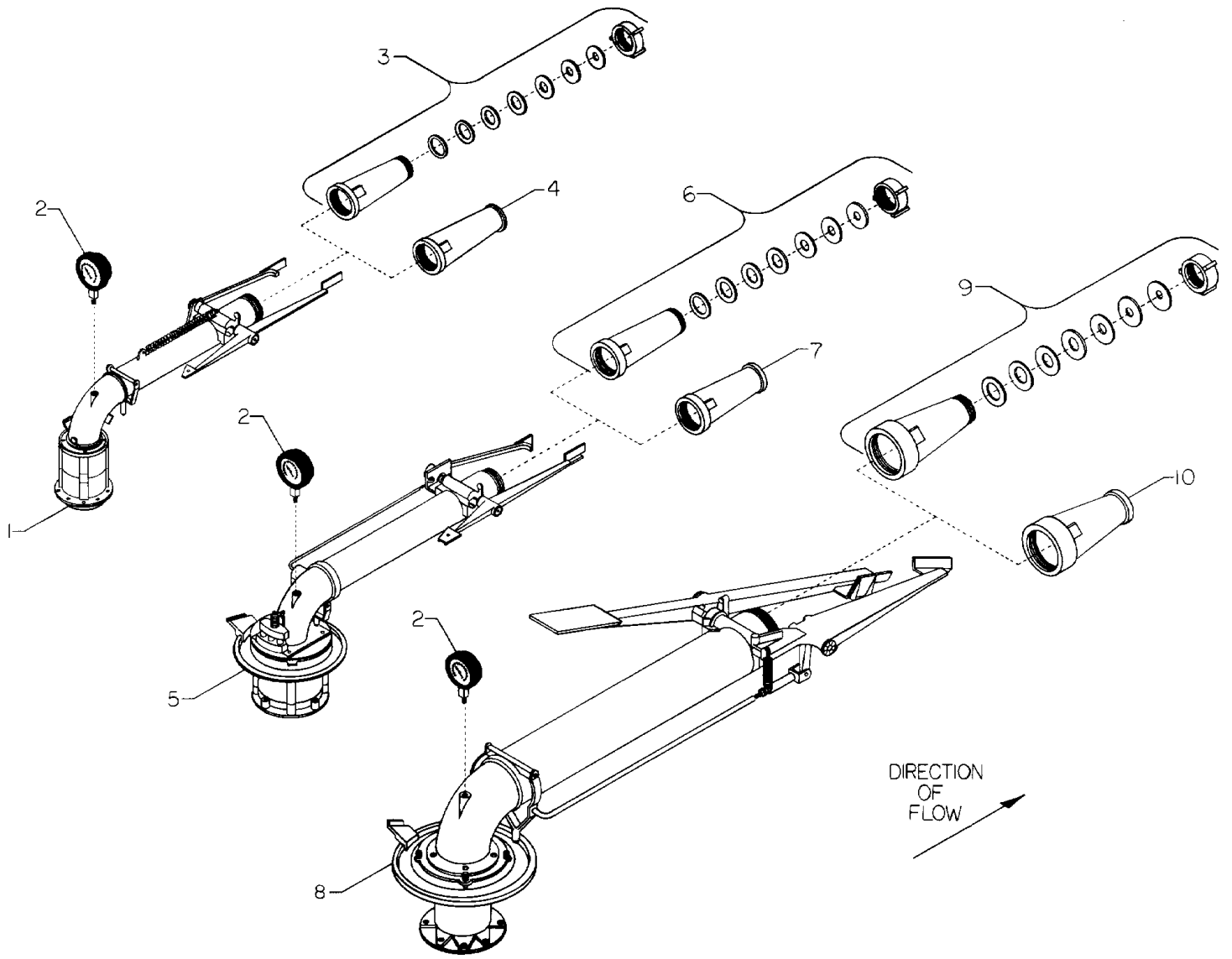
BATTERY INSTALLATION INSTRUCTIONS

TO PREVENT CONTACTS FROM BREAKING, PUSH
BACK METAL SPRINGS WHILE INSTALLING
BATTERIES (#15449 1.5 VOLT, SIZE N).



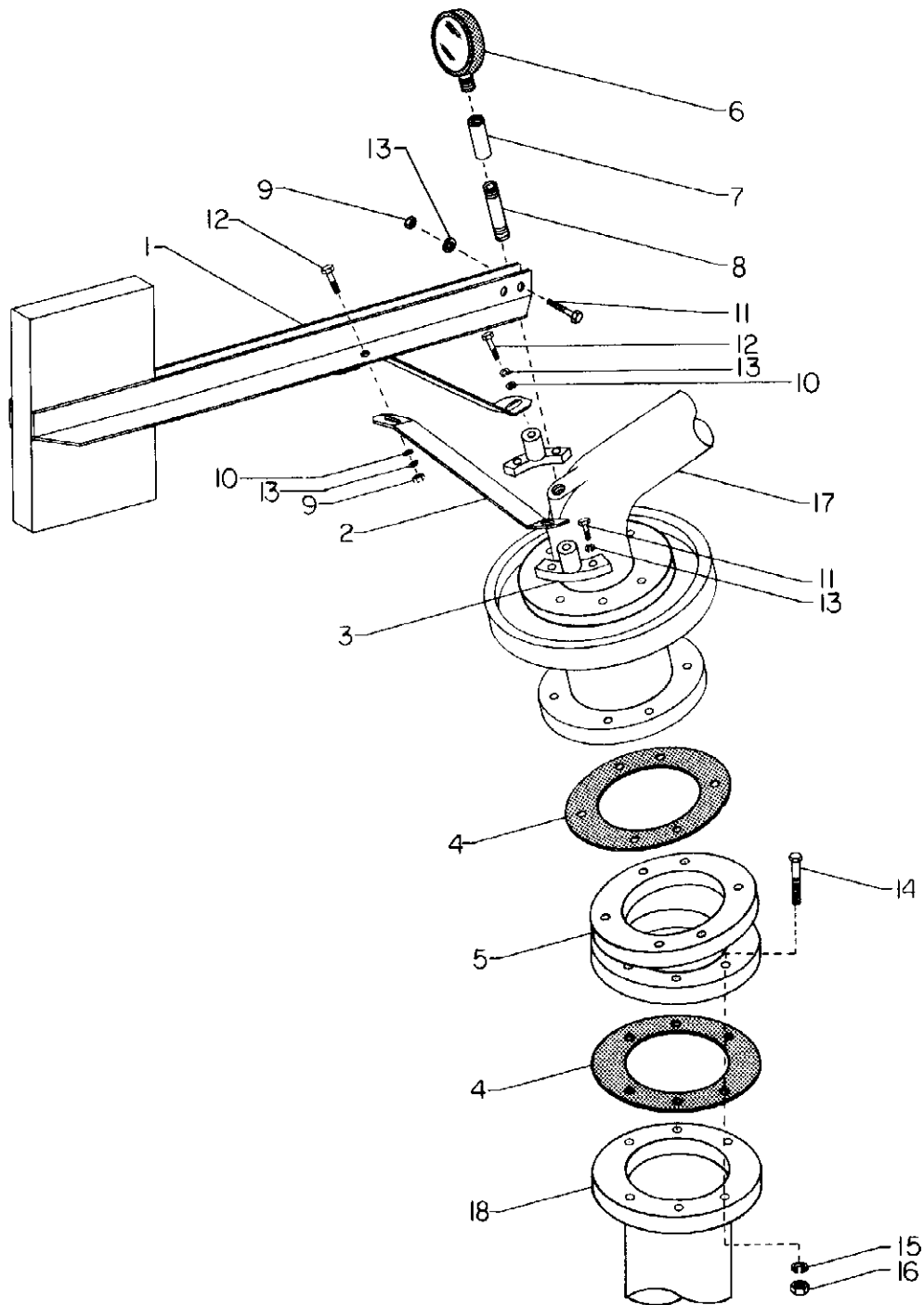
14. M30 GUNCART SECTION

NO.	PART NO.	KEYWORD	DESCRIPTION	NO.	REQ'D
1	2449	PLUMBING	GUNCART	1	
2	60070	FRAME	GUNCART CENTER	1	
3	9888	FRAME	GUNCART AXLE	2	
4	2196	PIN	PLATTED HAIR COTTER	1	
5	60069	MOUNT	HITCH	1	
6	4397	CHAIN	HITCH	1	
7	2056	PIN	HITCH	1	
8	1434	SHACKLE	7/16, 999-G	2	
9	90008	ANGLE	PIPE BRACE,LEFT	1	
10	90007	ANGLE	PIPE BRACE,RIGHT	1	
11	G272324	NUT	1"-14 HEX CASTLE	1	
12	2050	PIN	LOCKING	4	
13	8010	BOLT	LUG	4	
14	2212	PIN	5/32X1-1/2 COTTER	1	
15	8604K	NUT	LUG	12	
16	2451	VALVE	SELF DRAINING	1	
17	8053	TIRE	WHEEL, TUBE ASSEMBLY	1	
---	8054	TIRE	16 X 6.5 X 8, 4 PLY	1	
---	8055	TUBE	16 X 6.5 X 8	1	
---	8056	WHEEL	16 X 6.5, 4 LUG	1	
18	8604E	SEAL	HUB BEARING	2	
19	8604A	BEARING	ROLLER, LARGE	2	
20	8604C	CUP	BEARING, INNER	2	
21	8604	HUB	16", ASSEMBLY	2	
22	8604D	CUP	BEARING, OUTER	2	
23	8604B	BEARING	ROLLER, SMALL	2	
24	8604G	WASHER	SPINDLE	2	
25	8604H	PIN	COTTER	2	
26	8604F	NUT	CASTLE	2	
27	8604J	CAP	HUB	2	
28	S8073	WHEEL	TIRE, TUBE ASSEMBLY, 5.50-16"	2	
---	8073	WHEEL	5.50-16"	2	
---	8074	TIRE	5.50-16", 4 PLY	2	
---	8075	TUBE	5.50-16"	2	
29	8009	SEAL	AXLE	2	
30	8007	CONE	AND ROLLER ASSEMBLY	2	
31	8006	CUP	BEARING	A/R	
32	8067	HUB	4 LUG (LESS CUP)	A/R	
33	8005	HUB	CUP ASSEMBLY, 4 LUG	1	
34	N6023	GASKET	GUN FLANGE	OPT	
35	2357	PLUMBING	GUN EXTENSION, 12"	OPT	
---	2418	PLUMBING	GUN EXTENSION, 16"	OPT	
---	2378	PLUMBING	GUN EXTENSION, 20"	OPT	
36	2450	SPACER	AXLE	1	
37	2452	BUSHING	1-1/2 X 1 PIPE	1	
38	10199	AXLE	GUNCART	1	
39	9974	FRAME	GUNCART AXLE	1	
40	G180175	SCREW	1/2-13 X 1-1/4 USS CAP	2	
41	G120384	LOCKWASHER	1/2	6	
42	G120396	WASHER	1/2	8	
43	G180179	SCREW	1/2-13 X 1-3/4	4	
44	G120378	NUT	1/2-13 USS	4	
45	121242	MOUNT	SLOW MOVING DECAL	1	
46	121106	PLATE	SLOW MOVING DECAL	1	
47	8088	WEIGHT	WHEEL	OPT	



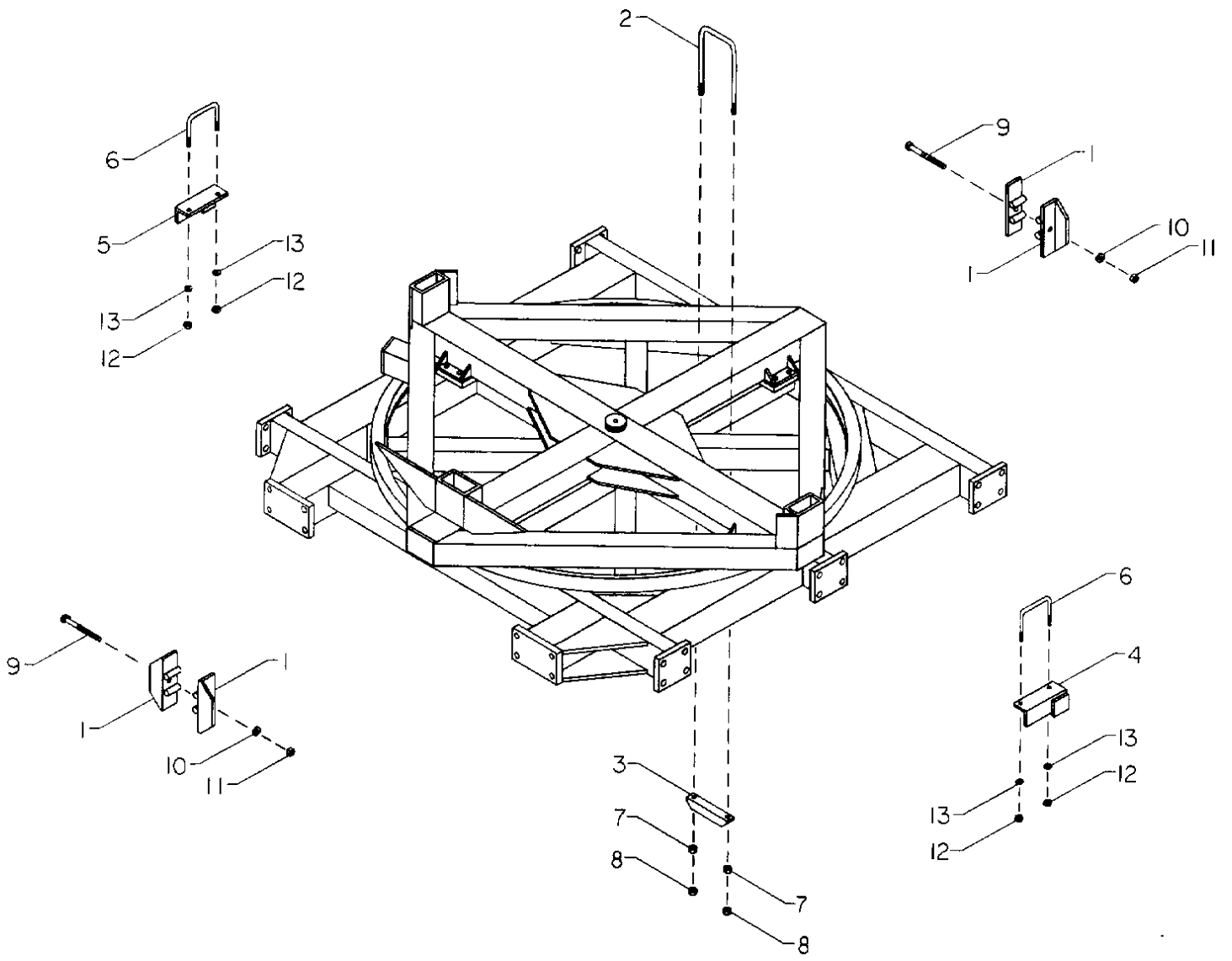
15. NELSON GUNS / NOZZLES SECTION

NO.	PART NO.	KEYWORD	DESCRIPTION	NO.	REQ'D
1	NP100-21	GUN	NELSON 100,21 DEGREE,WITH RING NOZZLE ..	A/R	
---	NP100-24	GUN	NELSON 100,24 DEGREE,WITH RING NOZZLE ..	A/R	
---	NP100-27	GUN	NELSON 100,27 DEGREE,WITH RING NOZZLE ..	A/R	
---	N6450	NOZZLE	NELSON 1/4" SECONDARY SPRAY,(NOT SHOWN)	OPT	
2	8592	GAUGE	NELSON 160 PSI PRESSURE	A/R	
3	N100RING	NOZZLE	NELSON 100 RING, WITHOUT RING SET	A/R	
---	N100SR	RINGS	SET OF 7, FOR 100 RING NOZZLE	A/R	
4	N100T0.5	NOZZLE	NELSON 100T; 0.5 TAPER BORE	A/R	
---	N100T0.55	NOZZLE	NELSON 100T; 0.55 TAPER BORE	A/R	
---	N100T0.6	NOZZLE	NELSON 100T; 0.6 TAPER BORE	A/R	
---	N100T0.65	NOZZLE	NELSON 100T; 0.65 TAPER BORE	A/R	
---	N100T0.7	NOZZLE	NELSON 100T; 0.7 TAPER BORE	A/R	
---	N100T0.75	NOZZLE	NELSON 100T; 0.75 TAPER BORE	A/R	
---	N100T0.8	NOZZLE	NELSON 100T; 0.8 TAPER BORE	A/R	
---	N100T0.85	NOZZLE	NELSON 100T; 0.85 TAPER BORE	A/R	
---	N100T0.9	NOZZLE	NELSON 100T; 0.9 TAPER BORE	A/R	
5	NP150-24	GUN	NELSON 150,24 DEGREE,WITH RING NOZZLE ..	A/R	
---	N6450	NOZZLE	NELSON 1/4" SECONDARY SPRAY,(NOT SHOWN)	OPT	
6	N150RING	NOZZLE	NELSON 150 RING, WITHOUT RING SET	A/R	
---	N150SR	RINGS	SET OF 7, FOR 150 RING NOZZLE	A/R	
7	N150T0.7	NOZZLE	NELSON 150T; 0.7 TAPER BORE	A/R	
---	N150T0.8	NOZZLE	NELSON 150T; 0.8 TAPER BORE	A/R	
---	N150T0.9	NOZZLE	NELSON 150T; 0.9 TAPER BORE	A/R	
---	N150T1.0	NOZZLE	NELSON 150T; 1.0 TAPER BORE	A/R	
---	N150T1.1	NOZZLE	NELSON 150T; 1.1 TAPER BORE	A/R	
---	N150T1.2	NOZZLE	NELSON 150T; 1.2 TAPER BORE	A/R	
---	N150T1.3	NOZZLE	NELSON 150T; 1.3 TAPER BORE	A/R	
8	NP200-24	GUN	NELSON 200,24 DEGREE,WITH RING NOZZLE ..	A/R	
---	NP200-27	GUN	NELSON 200,27 DEGREE,WITH RING NOZZLE ..	A/R	
---	N6450	NOZZLE	NELSON 1/4" SECONDARY SPRAY,(NOT SHOWN)	OPT	
9	N200RING	NOZZLE	NELSON 200 RING, WITHOUT RING SET	A/R	
---	N200SR	RINGS	SET OF 7, FOR 200 RING NOZZLE	A/R	
10	N200T1.05	NOZZLE	NELSON 200T; 1.05 TAPER BORE	A/R	
---	N200T1.1	NOZZLE	NELSON 200T; 1.1 TAPER BORE	A/R	
---	N200T1.2	NOZZLE	NELSON 200T; 1.2 TAPER BORE	A/R	
---	N200T1.3	NOZZLE	NELSON 200T; 1.3 TAPER BORE	A/R	
---	N200T1.4	NOZZLE	NELSON 200T; 1.4 TAPER BORE	A/R	
---	N200T1.5	NOZZLE	NELSON 200T; 1.5 TAPER BORE	A/R	
---	N200T1.6	NOZZLE	NELSON 200T; 1.6 TAPER BORE	A/R	
---	N200T1.75	NOZZLE	NELSON 200T; 1.75 TAPER BORE	A/R	
---	N200T1.9	NOZZLE	NELSON 200T; 1.9 TAPER BORE	A/R	



16. NELSON F200 GUN COUNTERWEIGHT SECTION

NO.	PART NO.	KEYWORD	DESCRIPTION	NO. REQ'D
1	60104	ARM	GUN COUNTERWEIGHT	1
2	60105	BRACE	ARM	2
3	60106	BRACKET	MOUNTING	2
4	N6023	GASKET	FLANGE, GUN	2
5	60107	PLUMBING	GUN MOUNT WEDGE	1
6	8592	GAUGE	NELSON 160 PSI PRESSURE	1
7	2443	COUPLER	1/4 NPT SCH 80	1
8	2444	NIPPLE	1/4 NPT SCH 80	1
9	G120376	NUT	5/16-18 USS	4
10	G120393	WASHER	5/16 FLAT	4
11	G180081	SCREW	5/16-18 X 1-1/4 USS CAP	6
12	G180079	SCREW	5/16-18 X 1 USS CAP	4
13	G120214	LOCKWASHER	5/16	10
14	G180130	SCREW	3/8-16 X 2 USS CAP	6
15	G120382	LOCKWASHER	3/8	6
16	G120377	NUT	3/8-16 USS	6
17		GUN	NELSON, SEE NELSON GUN PAGE	A/R
18		GUN CART	SEE GUNCART SUB-ASSEMBLY PAGES	A/R

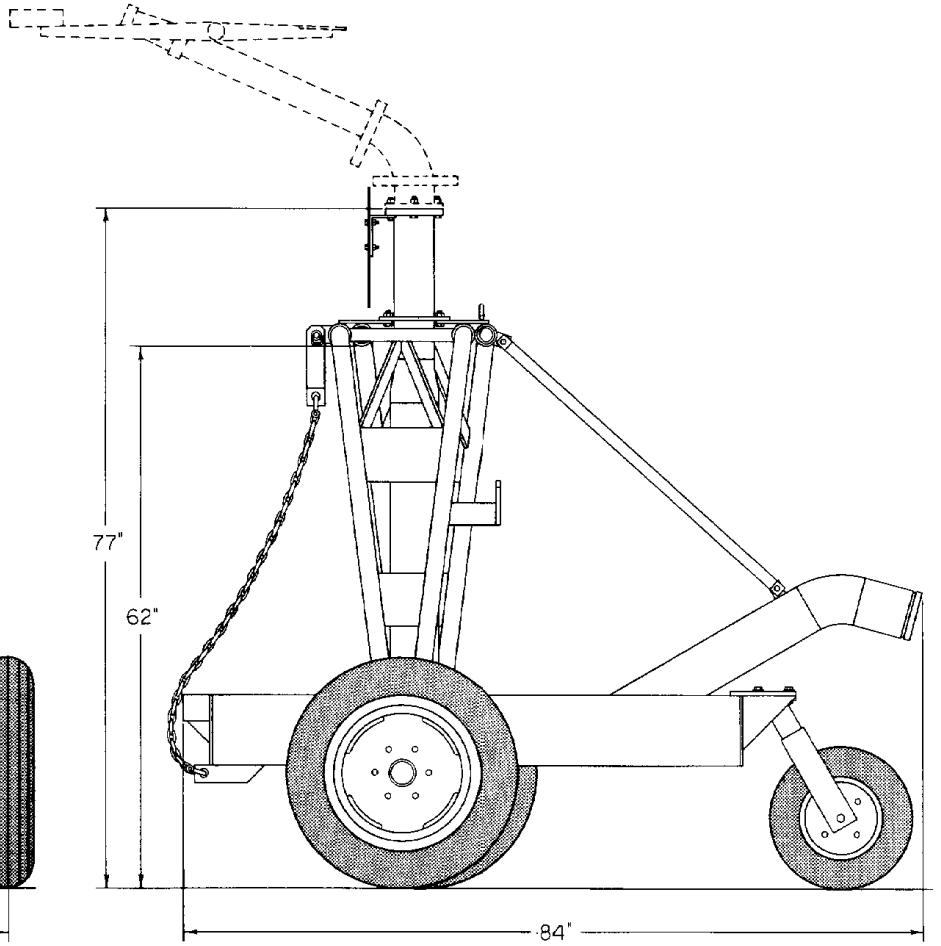
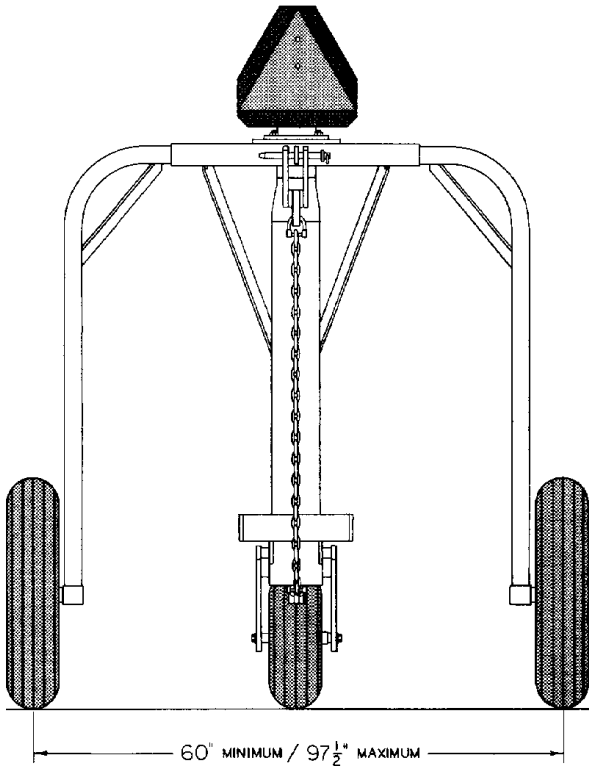


17. REELRAIN TOWING KIT SECTION

NO.	PART NO.	KEYWORD	DESCRIPTION	NO. REQ'D
1	60464	BRACKET	TRANSPORT	4
2	1437	ROD	U-BOLT	1
3	60109	ANGLE	U-BOLT	1
4	60110	BRACKET	SHIPPING,LEFT	1
5	60111	BRACKET	SHIPPING,RIGHT	1
6	1438	ROD	U-BOLT, SHIPPING	2
7	G120377	NUT	3/8-16 USS	2
8	G124829	NUT	3/8-16 USS JAM	2
9	G9413441	SCREW	5/8-11 X 8 USS CAP	2
10	G121574	LOCKWASHER	5/8	2
11	G124589	NUT	5/8-11 USS	2
12	G120378	NUT	1/2 USS	4
13	G120384	LOCKWASHER	1/2	4

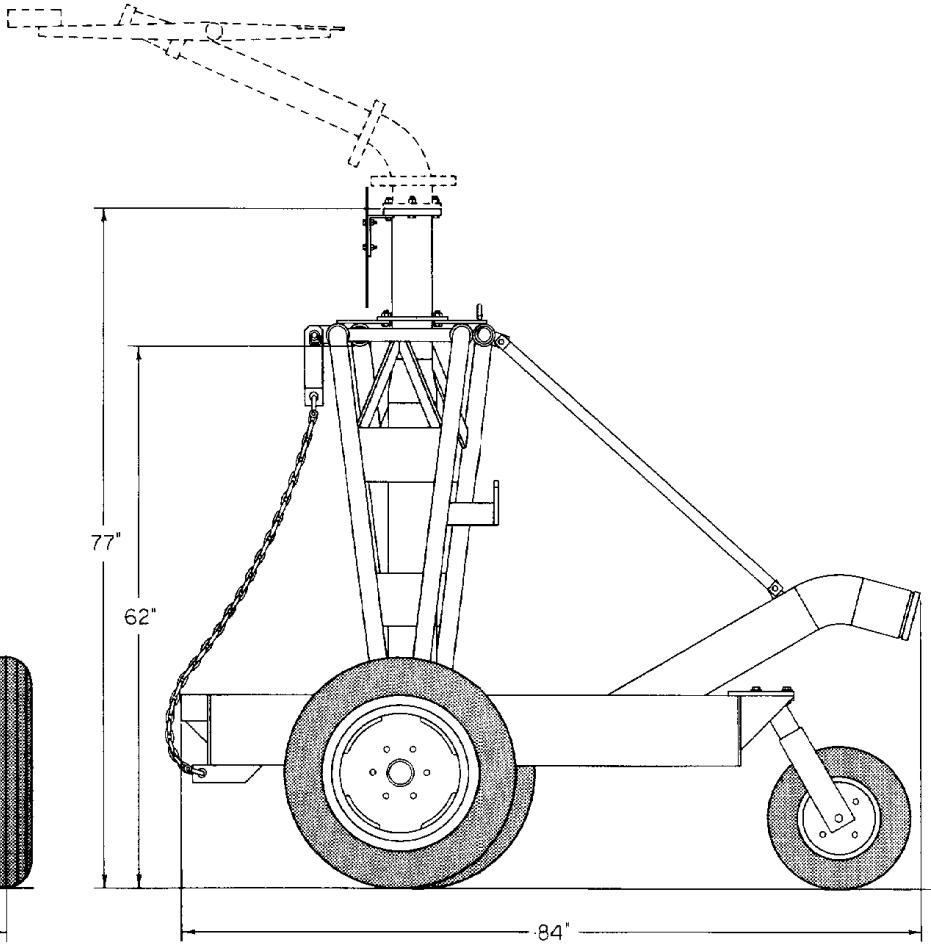
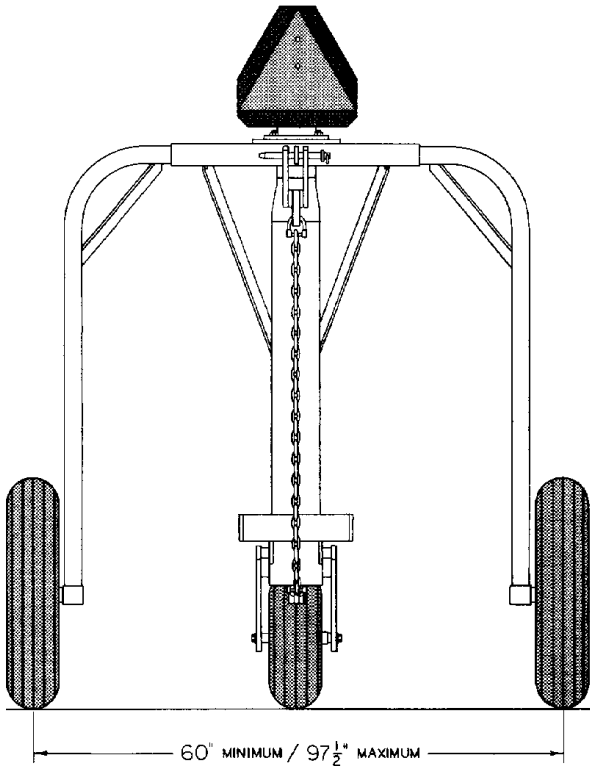
M30 GUN CART
SPECIFICATIONS

PAGE 48



M30 GUN CART
SPECIFICATIONS

PAGE 48



NUMERICAL PARTS INDEX

PART NO.	PAGE	PART NO.	PAGE	PART NO.	PAGE
B44	24	N100T0.7	43	11106	11
B45	28	N100T0.75	43	11115	17
G116003	19,23,28	N100T0.8	43	11116	17
G120214	45	N100T0.85	43	11117	17
G120217	39	N100T0.9	43	12029	24
G120369	10,15,20,25,29	N15ORING	43	121103	6
	31	N15OSR	43	121104	7
G120375	24,39	N150T0.7	43	121105	7
G120376	19,24,27,45	N150T0.8	43	121106	41
G120377	3,10,19,23,31	N150T0.9	43	121107	6
	45,47	N150T1.0	43	121108	7
G120378	41,47	N150T1.1	43	121109	6
G120380	24,39	N150T1.2	43	121110	6
G120382	45	N150T1.3	43	121111	6
G120384	3,41,47	N20ORING	43	121112	6
G120385	24	N20OSR	43	121113	6
G120392	24	N200T1.05	43	121114	7
G120393	45	N200T1.1	43	121115	7
G120394	15,20,25,29,31	N200T1.2	43	121116	7
G120396	15,41	N200T1.3	43	121122	33
G120910	19,23,27,39	N200T1.4	43	121123	33
G120917	33	N200T1.5	43	121141	3
G121574	31,47	N200T1.6	43	121142	33
G124589	31,47	N200T1.75	43	121223	33
G124829	47	N200T1.9	43	121224	33
G124934	15,20,24,28	N6023	41,45	121233	33
G126504	33	N6450	43	121234	33
G131017	3,05,09,37	S4367B	5	121235	33
G131046	3,05	S5538	10	121236	33
G180024	24	S6932	3	121242	41
G180034	24	S6991	10	121307	6
G180079	45	S8070	3	121308	6
G180081	19,24,27,45	S8073	41	121317	20
G180130	45	1008	13	121319	19,23,28
G180134	19,23	10176	14,20,24,28	121321	19
G180175	3,41	10179	33	121323	7
G180179	41	10181	5	121324	7
G189305	3,10,19,25,31	10196	9	121339	20
G220086	3,05	10197	9	121384	23
G271731	31	10198	5	121400	15,20,25,29
G272324	41	10199	41	121402	33
G426897	31	10241	39	121403	33
G9413441	47	1036	27	121404	33
G9429892	3	11093	13,17	121405	33
NF100-21	43	11093A	17	121526	39
NF100-24	43	11093B	17	121641	28
NF100-27	43	11093C	17	121803	27
NF150-24	43	11095	5	121807	33
NF200-24	43	11096	10	121808	33
NF200-27	43	11098	13,20,25,28	121809	33
N10ORING	43	11101	17	13323	24
N10OSR	43	11103	19	1398	10
N100T0.5	43	11103A	19,23,27	1399	5
N100T0.55	43	11103B	19,23,27	14027	35
N100T0.6	43	11103C	19,23,27	1413	3
N100T0.65	43	11104	23,27	1423	37

NUMERICAL PARTS INDEX

PART NO.	PAGE	PART NO.	PAGE	PART NO.	PAGE
1426	3	2050	10, 41	2427	35
1427	14	2052	19, 23	2428	35
1434	41	2053	19, 23	2430	35
1435	3	2056	3, 41	2431	35
1437	47	2083	24	2433	33
1438	47	2085	24	2442	35
1441	31	2109	14, 21, 24, 28	2443	45
1442	7	2128	19, 23, 28	2444	45
1443	19, 23, 29, 31	2158	20, 24	2446	33
1444	7, 39	2196	3, 41	2447	35
1445	7	2198	15, 20, 24, 28	2448	35
1449	39	2212	41	2449	41
14531	35	2214	19, 25, 27	2450	41
14532	35	2216	31	2451	41
14537	35	2234	10, 15, 19, 31	2452	41
14542	28	2235	19	2459	14
14542-12	19	2244	10	2465	31
14542-48	19	2282	6	2466	19
14542-54	23	2290	14	2482	19, 25, 28
14542-80	19	2292	14, 33, 35	2484	19
14543	19, 23, 27	2293	14	2485	19
1460	39	2294	14	2487	25, 28
14605	33	2301	14	2650	37
14606	33	2302	14	2683	39
14607	33	2304	35	2684	39
14608	33	2305	13	3011	10
14609	33	2324	33	3014	11
1461	37	2326	6, 37	3029	11
14610	33	2330	13	3048	6
14611	33	2332-3	14, 19, 25, 28	3080	10
14612	33	2332-4	14, 19, 25, 28	3083	6
14613	33	2333	14, 20, 24, 28	3084	6
15089	39	2334	3	3086	9
15095	39	2339	35	3087	9
15232-20	27	2346	13	3098	10
15264	19	2347	13	3099	11
15265	19	2348	13	3108	9
15266	19	2353	13	3111	9
15276	24	2354	14	3118	3
15405	27, 39	2356	37	4043	9, 13, 20, 25, 29
15408	39	2357	41	4043-79	9
15408A	39	2363	19, 28	4043-98	13, 20, 25, 29
15409	39	2365	15	4043A	9, 13, 20, 25, 29
15410	39	2366	3, 05	4043B	9
15421	27	2374	3	4076	19, 23
15425	27	2378	41	4262	6
15431	27	2404	35	4262-233	6
15448	27	2406	35	4262A	6
15449	39	2408	35	4262B	6
2007	10, 13	2409	35	4292-27	19, 23
2020	7, 09, 14, 20, 25	2415	35	4292-29	27
	29	2418	41	4292-9	19
2041	10, 14, 20, 25, 29	2420	33	4363	13
	31	2421	35	4364	33
2042	10, 14, 20, 25, 29	2423	35	4365	33
	31	2424	35	4365-143F	5

NUMERICAL PARTS INDEX

PART NO.	PAGE	PART NO.	PAGE	PART NO.	PAGE
4365-394	33	60106	45	6977	13
4365A	5	60107	45	6978	13
4365B	33	60108	3	6991	10
4367	5	60109	47	7012	9
4370	13,19,25,28	60110	47	7013	14
4375	33	60111	47	7019	14,19,23,27,31
4377	14,33,35	60146	20,24	7024	7
4378	14	60147	19,23	7042	3
4380	37	60148	19	7046	19,23
4383	14	60149	19	7048	24
4384	17	60150	19,23,27	7626	10
4397	41	60151	19,23	7629	10
4413	19,25,28	60153	6	7630	3
4447	37	60170	24	7638	19
5L430	19	60171	24	7790	33
51022	6	60176	25	7793	39
51025	9	60331	39	7795	39
51026	13,20,25,28	60340	37	7820	39
51027	10	60374	29	7821	39
51030	10	60380	27	7822	39
51031	5	60464	47	7823	39
51032	5	6111	24	7824	39
51033	9	6112	24	7825	39
51040	9	6200	13	8005	41
51041	6	6205	14,21,25,28	8006	41
51042	6	6346	10	8007	41
5209	6,09,14,20,25 29,31	6574	3,10	8009	41
5212	6	6783	13,20,25,29	8010	41
5407	7	6931	3	8017	3
5533	14	6932	3	8020	3
5534	14	6933	37	8053	41
5535	10	6935	5	8054	41
5536	3	6936	10	8055	41
5540	3	6937	35	8056	41
5566	20,24,29	6938	9	8067	41
5583	13,20,25	6939	6	8070	3
5621	3	6942	10,31	8071	3
5622	3	6943	13	8073	41
5628	39	6944	13,21,25,28	8074	41
5629	39	6946	33	8075	41
5631	13,20,25	6947	6	8088	41
5635	13,20,25	6948	6	8096	39
5688	9	6952	5	8125	27
5691	10	6953	5	8126	27
60069	41	6955	11	8127	27
60070	41	6956	5	8587	5
60091	13,31	6958	3	8592	43,45
60092	3	6959	37	8598	9
60093	37	6960	37	8598A	9
60094	9	6961	37	8600	11
60097	37	6963	37	8603	3
60102	9	6964	37	8603A	3
60103	3	6965	37	8603B	3
60104	45	6966	37	8603C	3
60105	45	6971	10	8603D	3
		6973	13	8603E	3

NUMERICAL PARTS INDEX

PART NO.	PAGE	PART NO.	PAGE	PART NO.	PAGE
8603F	3	90306	27		
8603G	3	90479	27		
8603J	3	9859	3		
8604	41	9860	3		
8604A	41	9863	9		
8604B	41	9865	5		
8604C	41	9866	5		
8604D	41	9867	9		
8604E	41	9868	9		
8604F	41	9870	5		
8604G	41	9871	5		
8604H	41	9872	35		
8604J	41	9874	13,31		
8604K	41	9878	3		
8608	6	9888	41		
8614	37	9935	5		
8624	17	9936	37		
8625	17	9948	3		
8626	14,19,25,28	9949	3		
8630	17	9956	5		
8631	17	9973	5		
8632	17	9974	41		
8633	17	9996	19		
8650	3	9998	15		
8680	35	9999	15		
8787	35				
8796	5				
8797	5				
8798	17				
8802	23				
8802A	24,28				
8803	19				
8819	20				
8820	20				
8828	19,23,28				
8828A	19,23,28				
8829	20				
8831	19				
8832	19				
8837	17				
8894	37				
8960	39				
8989	39				
8999	27				
90004	31				
90007	41				
90008	41				
90014	31				
90039	11				
90042	19,23,28				
90043	23,27				
90044	24				
90048	33				
90193	3				
90206	33				
90301	28				