

TABLE OF CONTENTS

CAT235
1st Edition
August 28, 2002

MODEL A922BX MACHINE ID M6522JD 22FT. EDIBLE BEAN HEADER

Beginning Serial #400000

Section	Page
1 Header Pick-Up.....	3
2 Header Auger.....	5
3 Left Side Drives & Shields.....	7
4 Right Side Shields.....	9
5 Gauge Wheels & Vine Hold-Down.....	11
6 Gauge Wheel Hub Assembly.....	13
John Deere Parts Listing	

NOTES

The Terms "Left" and "Right" used in the description of parts are determined by facing the direction of travel of the machine.

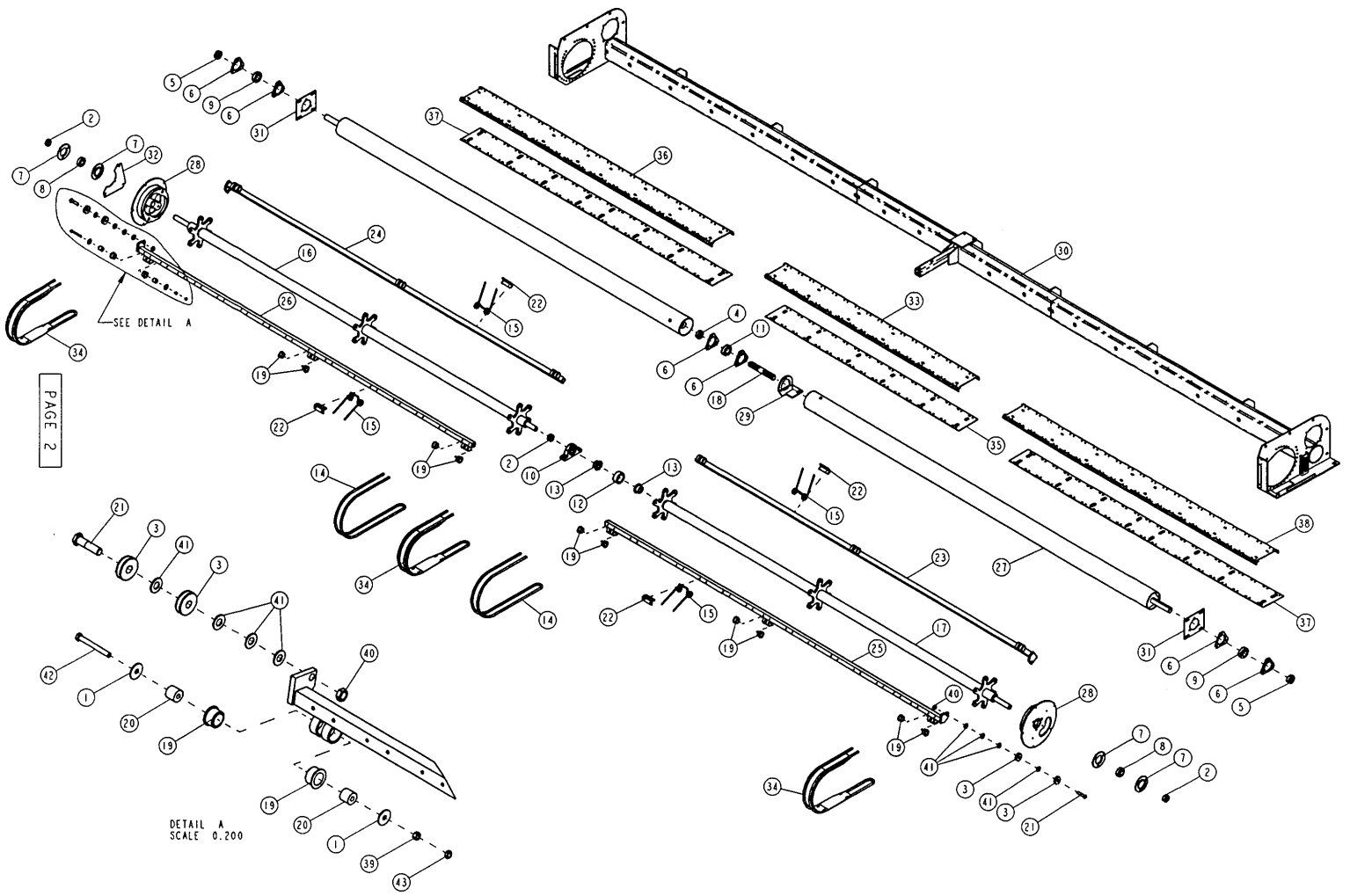
"A/R" found in the "No. Req'd" column denotes "As Required".

"OPT" found in the "No. Req'd" column denotes "Optional".

1100 Holland Road Suffolk, VA 23434 U.S.A.
(757) 539-0231 / Fax - (757) 934-3264

1701 S. Slappey Blvd./P.O. Box 3687 Albany, GA 31706
(229) 439-2217 / Fax (229) 439-9343

A M A D A S
INDUSTRIES

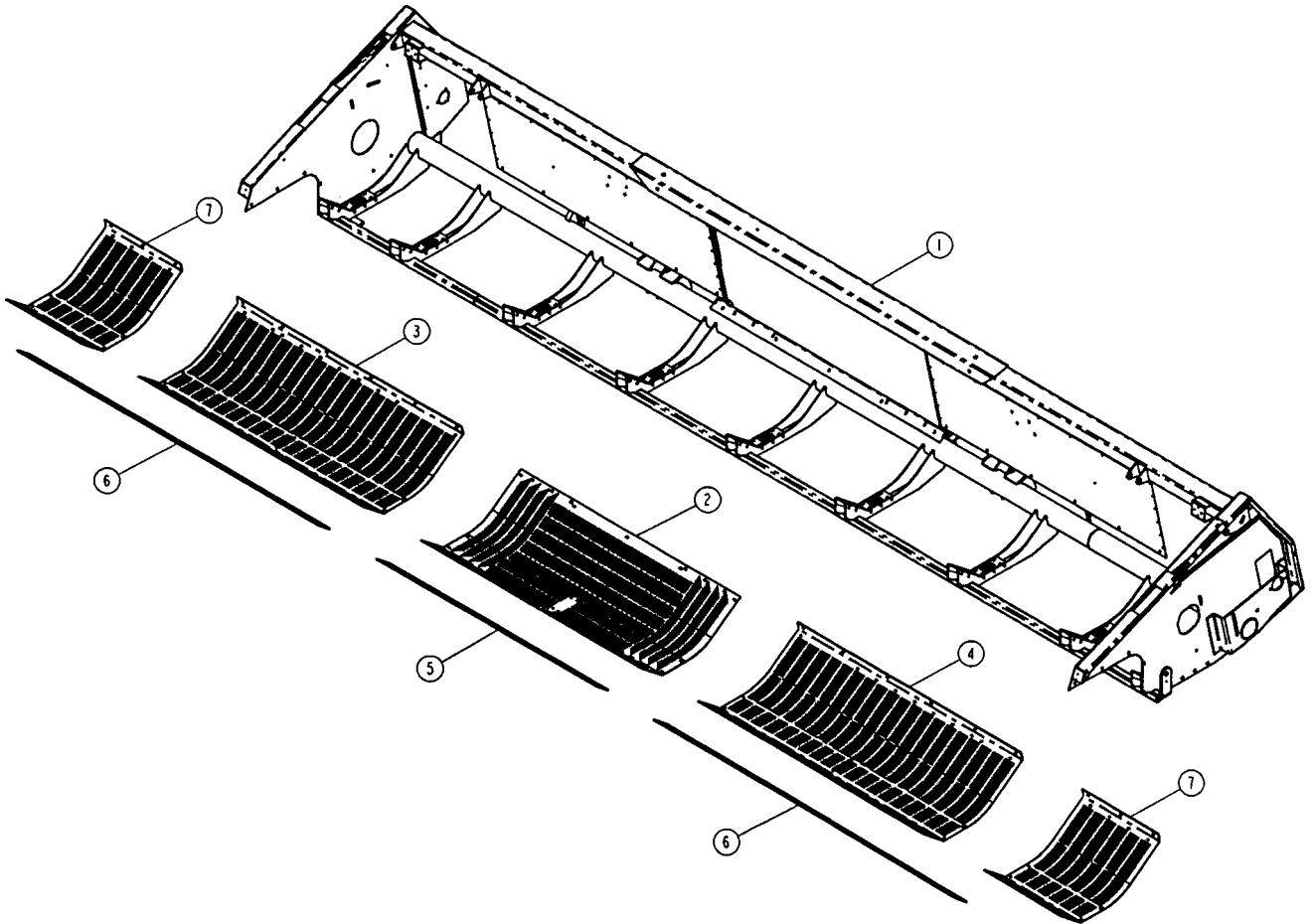


PAGE 2

DETAIL A
SCALE 0.200

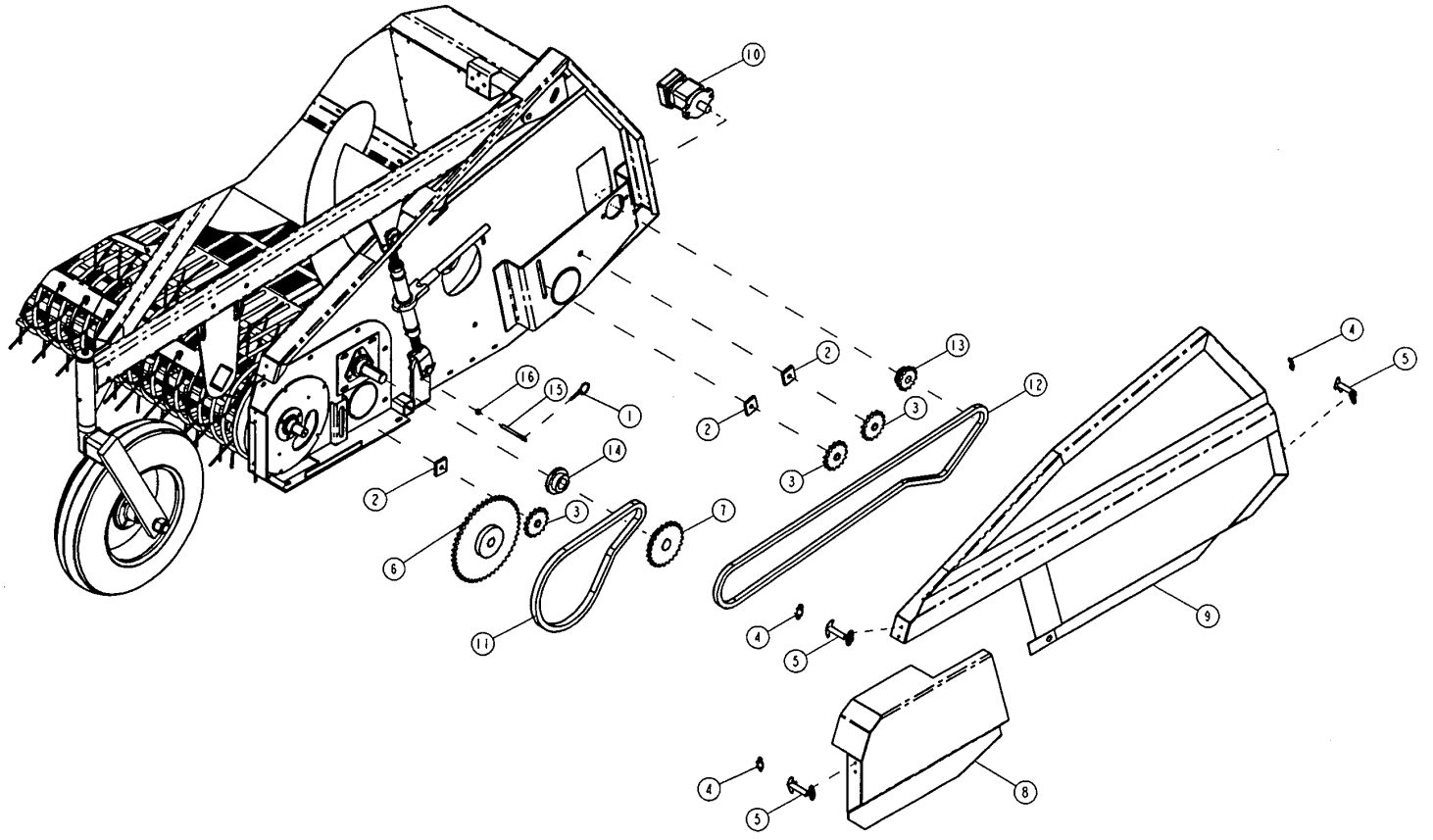
BEAN HEADER PICK-UP

ITEM	PART NUMBER	DESCRIPTION	QTY SHOWN	QTY REQ'D	COMMENTS
1	1641	WASHER, 1-3/8 X 13/32 X 14GA.	2	72	
2	3005	COLLAR, 1.3/16 ECC. LOCKING	3	A/R	
3	3010	BEARING, 5/8 CAM FOLLOWER RADIAL	4	24	
4	3077	COLLAR, 1-3/8 ECCENTRIC LOCKING	1	A/R	
5	3080	COLLAR, 1-7/16 ECCENTRIC LOCKING	2	A/R	
6	3091	FLANGETTE, 72MS FOR 1-3/8 & 1-7/16 BEARING	6		
7	3093	FLANGETTE, 62MS FOR 1.3/16 BEARING	4		
8	3096	INSERT, 1.3/16 REPLACEMENT BEARING	2		
9	3098	INSERT, 1-7/16 REPLACEMENT BEARING W/COLLAR	2		
10	3171	BEARING, 1.3/16 PILLOW BLOCK	1		
11	3187	INSERT, 1-3/8 WIDE INNER RING	1		
12	4480	CHAIN, COUPLING ROLLER	1		
13	5730	COUPLING, C4016 X 2/1.3/16	2		
14	7081	BAND, PICK-UP; 1/2" ROUND	2	58	
15	7083	SPRING, TORSION; 56 DEG.	4	192	
16	10843	ROTOR, RIGHT 22' BEAN HEADER PICKUP; STS	1		
17	10844	ROTOR, LEFT 22' BEAN HEADER PICKUP; STS	1		
18	10854	SHAFT, EXTENSION 1-3/8 6 SPLINE	1		
19	20178	BUSHING, POLY. (STRIP./HEADER); 7/8 LONG	12	72	
20	20179	BUSHING, 1.063 OD X .406 ID X .948 AST	2	72	
21	20571	SCREW, 5/8-18 X 2-1/2; 1/4 HEAD	2	12	
22	61710	PLATE, SPRING RETAINER	4	192	
23	61779	BAR, LEFT 22' BEAN HEADER PICKUP; STS	1		
24	61780	BAR, RIGHT 22' HEADER PICKUP; STS	1		
25	61781	BAR, LEFT 22' BEAN HEADER PICKUP; STS	1		
26	61782	BAR, RIGHT 22' BEAN HEADER PICKUP; STS	1		
27	61783	ROLLER, 22' VINE; STS	2		
28	93555	CAM, PEANUT	2		
29	93682	MOUNT, CENTER BEARING	1		
30	93821	FRAME, 22' BEAN HEADER PICK-UP; STS	1		
31	127045	MOUNT, 3-HOLE FLANGE BEARING	2		
32	127212	PLATE, HEADER BAR BEARING ACCESS	1		
33	127222	PLATE, HEADER BAND MOUNTING	1		
34	127437	BAND, HEADER	3		
35	127473	PLATE, HEADER BAND MOUNTING	1		
36	127477	PLATE, HEADER BAND MOUNTING; UPPER	1		
37	127478	PLATE, HEADER BAND MOUNTING	2		
38	127535	PLATE, HEADER BAND MOUNTING; UPPER	1		
39	6120377	NUT, 3/8-16 USS; GRADE 5	1	36	
40	6124944	NUT, 5/8-18 SAE JAM	2	12	
41	6131016	WASHER, 5/8 SAE FLAT	8	48	
42	6189306	SCREW, 3/8-16 X 3-1/2 USS CAP; GRADE 8	1	36	
43	6431799	LOCKNUT, 3/8-16 USS NYLOCK HEX	1	36	



BEAN HEADER AUGER

ITEM	PART NUMBER	DESCRIPTION	QTY SHOWN	QTY REQ'D	COMMENTS
1	93822	FRAME, 22' BEAN AUGER; STS	1		
2	127223	PLATE, BEAN AUGER FRAME CENTER FLOOR	1		
3	127224	PLATE, RIGHT 18' BEAN AUGER FRAME FLOOR	1		
4	127225	PLATE, LEFT 18' BEAN AUGER FRAME FLOOR	1		
5	127294	STRIPPER, 18' BEAN HEADER VINE ROLLER (STS)	1		
6	127479	STRIPPER, 22' BEAN HEADER VINE ROLLER; STS	2		
7	127487	PLATE, BEAN AUGER FRAME FLOOR; END	2		

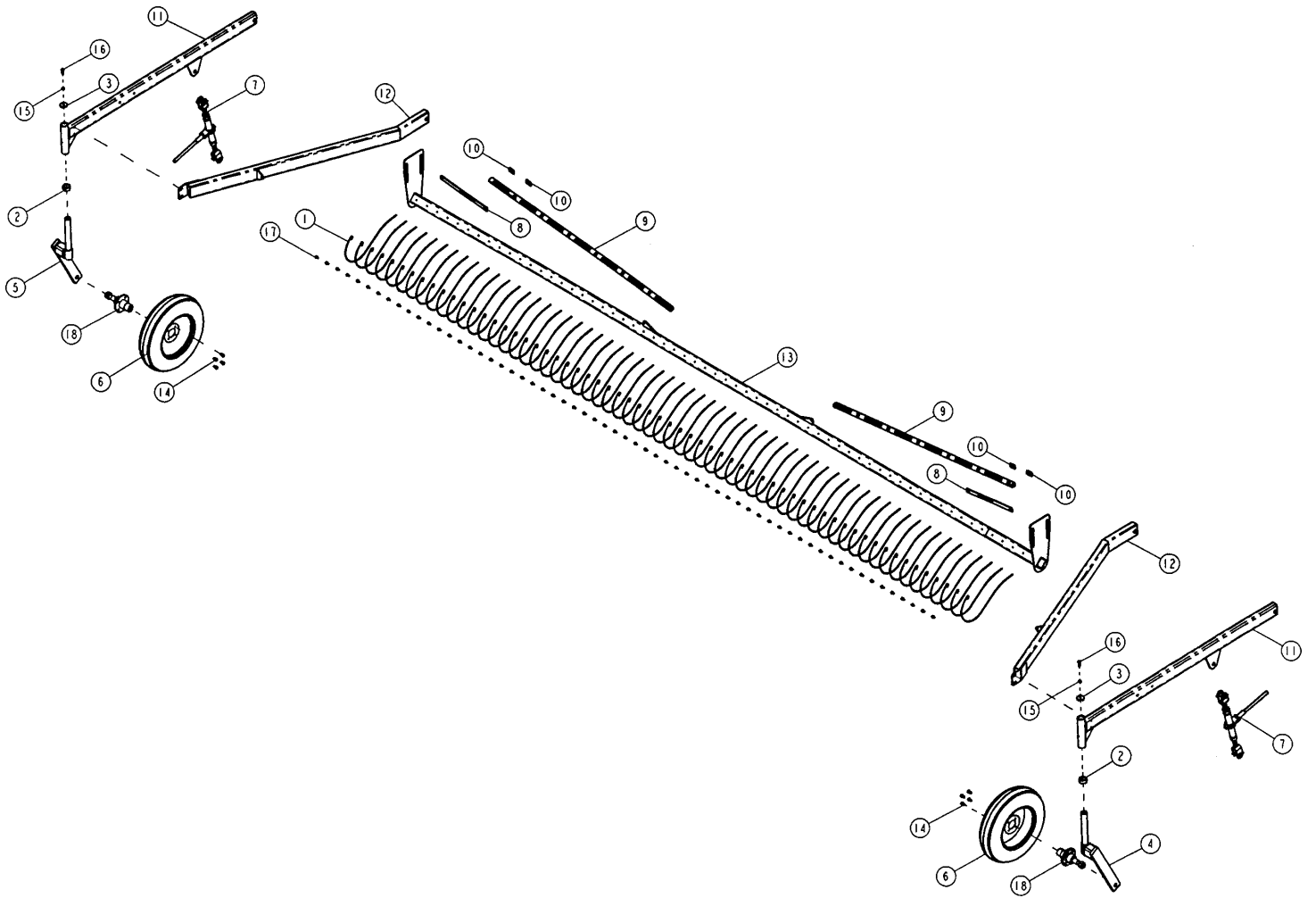


LEFT SIDE DRIVES & SHIELDS

ITEM	PART NUMBER	DESCRIPTION	QTY SHOWN	QTY REQ'D	COMMENTS
1	1400	PIN, LYNCH, 1/4" STANDARD	1		
2	2020	NUT, 5/8-11.2X1-3/4 IDLER ADJ	3		
3	5122	IDLER, NO.60 CHAIN SPROCKET	3		
4	7023	CATCH,HOOK	3		
5	7024	HOOK, SPRING LOADED; 90 DEGREE	3		
6	51051	SPROCKET, 60B48 F1-3/16	1		
7	51079	SPROCKET, 60B24 F1-7/16; 2 SETSCREWS	1		
8	127309	SHIELD, LEFT BEAN PICK-UP (STS)	1		
9	127311	SHIELD, LEFT BEAN HEADER (STS)	1		
10	140438	MOTOR, HYD. RS SERIES; 5.4 CU. IN.	1		
11	4043-69	CHAIN, NO.60 ROLLER, 67 PITCHES+CONN.+OFFSET	1		
12	4043-134	CHAIN, NO.60 ROLLER, 132 PITCHES+CONN.+OFFSET	1		
13	60B12-1	SPROCKET, 60B12 F1	1		
14	60B13-1-7	SPROCKET, 60B13-1-7	1		
15	G100030	BOLT, HANGER 3/8-16 X 4-1/4	1		
16	G128001	NUT, 5/16-18 SERRATED FLANGE	2		

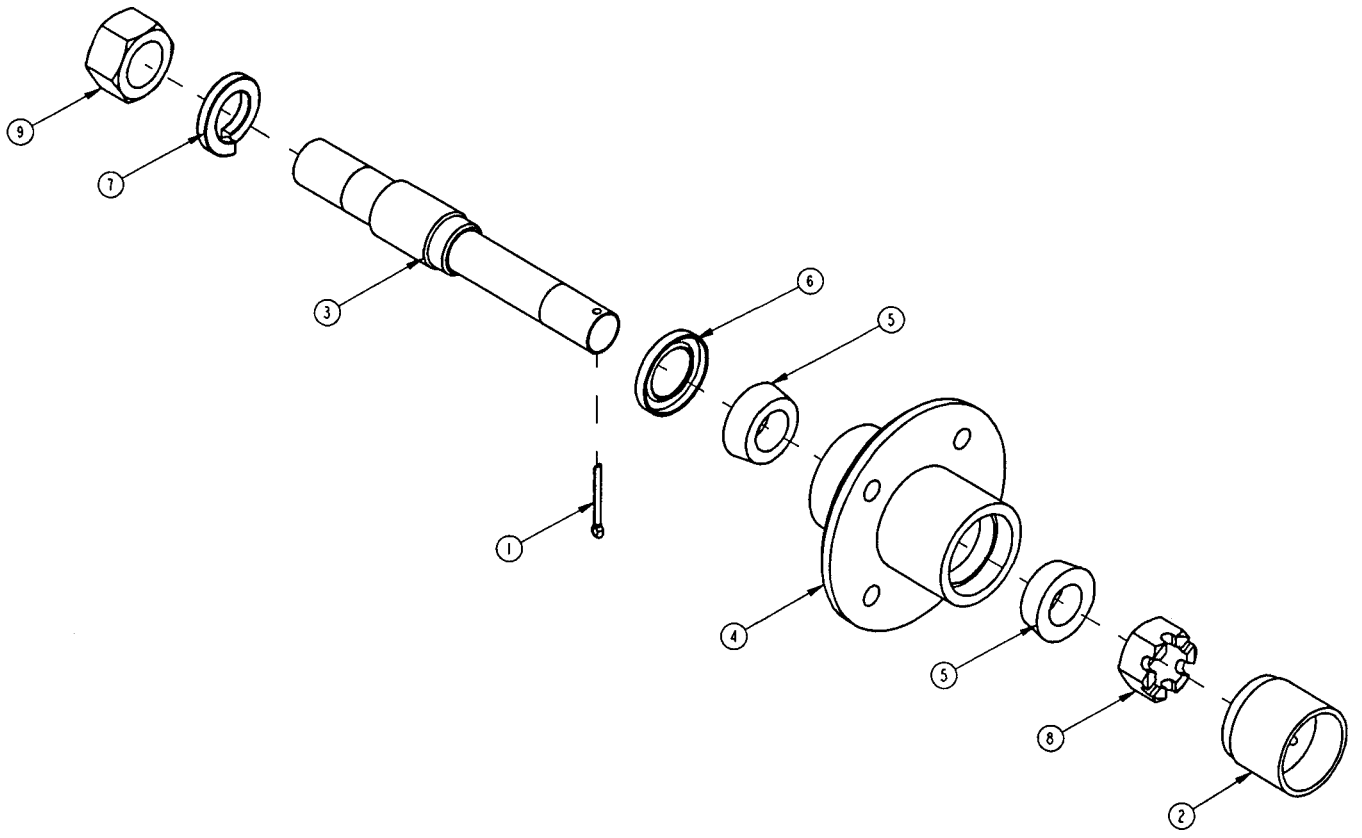
RIGHT SIDE SHIELDS

ITEM	PART NUMBER	DESCRIPTION	QTY SHOWN	QTY REQ'D	COMMENTS
1	1400	PIN, LYNCH, 1/4" STANDARD	1		
2	5198	SPROCKET, 60B16 F1-3/16	1		
3	7023	CATCH, HOOK	3		
4	7024	HOOK, SPRING LOADED; 90 DEGREE	3		
5	127310	SHIELD, RIGHT BEAN PICK-UP	1		
6	127312	SHIELD, RIGHT BEAN HEADER (STS)	1		
7	127424	BRACKET, PICK-UP	1		
8	127583	BRACKET, SHIELD MT'G	1		
9	4043-93	CHAIN, NO. 60 ROLLER, 91 PITCHES+CONN.+OFFSET	1		
10	G100030	BOLT, HANGER 3/8-16 X 4-1/4	1		
11	G128001	NUT, 5/16-18 SERRATED FLANGE	2		
12	JAH116104	SENSOR, SHAFT SPEED (40-47)	1		
13	JH104418	NUT, SENSOR FOR TRANSMISSION	2		



GAUGE WHEELS & VINE HOLD-DOWN

ITEM	PART NUMBER	DESCRIPTION	QTY SHOWN	QTY REQ'D	COMMENTS
1	7420	SPRING,VINE HOLD-DOWN	61		
2	20632	BUSHING, CASTER; 1" LONG	2		
3	20633	CAP, CASTER SPACER	2		
4	61749	CASTER, LEFT GAUGE WHEEL	1		
5	61750	CASTER, RIGHT GAUGE WHEEL	1		
6	80114	ASSEMBLY, TIRE & RIM A78-13ST 4-4	2		
7	80453	JACK, RACHET	2		
8	93565	BAR,VINE HOLD-DOWN SUPPORT	2		
9	93614	TUBING,VINE HOLD-DOWN SUPPORT	2		
10	93615	BAR,VINE HOLD-DOWN CLAMPING	4		
11	93675	MOUNT, GAUGE WHEEL	2		
12	93678	TRUSS, GAUGE WHEEL	2		
13	93823	FRAME, VINE HOLD-DOWN; 22'	1		
14	80113E	BOLT, LUG	8		
15	G120384	LOCKWASHER, 1/2	2		
16	G180177	SCREW, 1/2-13 X 1-1/2 USS CAP	2		
17	G180079T	SCREW, 5/16-18 X 1 TAP, WASHERHEAD	61		
18	S80113	ASSEMBLY, HUB,CUP, CONE&ROLLERS, SEAL	2		



GAUGE WHEEL HUB

ITEM	PART NUMBER	DESCRIPTION	QTY SHOWN	QTY REQ'D	COMMENTS
1	2212	PIN, COTTER 5/32X1-1/2	1		
2	3204	PROTECTOR, BEARING (BT-8)	1		
3	10749	SPINDLE, CASTER	1		
4	80113A	ASSEMBLY, HUB & CUP ONLY	1		
5	80113B	CONE & ROLLER ASSEMBLY, FOR 1" SHAFT	2		
6	80113C	SEAL, FOR 1" BEARING	1		
7	G131051	LOCKWASHER, 1-1/8	1		
8	G272325	NUT, 1-14 SAE HEX SLOTTED	1		
9	G273208	NUT, 1-1/8 -12 SAE	1		

**PARTS FOR 922 EDIBLE BEAN HEADER FOR JOHN DEERE STS
900 R AND F CUTTING PLATFORMS PARTS CATALOG
PC2771**

PART NO.	DESCRIPTION	QTY
AH116104	Sensor, Shaft Speed (40-47)	1
AH128241	Coupler, Hyd Qk Disconnect W/Lever	1
AH138180	Sprocket, Chain; 13 Teeth	1
AH148573	Sprocket, Chain; 40 Teeth	1
AH149325	Kit, R.H. Auger Mounting W/Bracket	1
AH151356	Adjusting Strap	1
AH153804	Bracket	1
AH155077	U-Joint, W/Shaft & Shield	1
AH155215	Bracket, R.H. Marker Light	1
AH155216	Bracket, L.H. Marker Light	1
AH162064	Coupling	1
AH163087	Shield, R.H.	1
AH163088	Shield, L.H.	1
AH164497	Light	2
AH20443	Sprocket, Chain	1
AH205648	Auger, 22' Full Finger Auger	1
AN102010	Bearing	2
AR94522	Coupler, 8 Orb Fem-1/2" QD Male	1
A15898	Cap	1
A31870	Locknut	2
H101677	Jaw	1
H101678	Hub	1
H104418	Nut, Sensor For Transmission	2
H109855	Spring	1
H117229	Yoke, Clamp Quick Disc Coupler	1
H125403	Plug	1
H128039	Bracket, Quick Disc Mounting	1
H129243	Stripper, (922)	2
H136110	Isolator, Hand Rail; SAE Lights	4
H136751	Decal, Header Latch Plate	1
H137143	Plate,	2
H138266	Support, R.H.	1
H138267	Support, L.H.	1
H147699	Eyebolt	3
H153591	Drive Shaft, 22'	1
H153594	Shaft	1
H153595	Spacer	1
H153899	Pin	1
H161529	Housing, Pressed Flanged	4
H161618	Clamp, Light Bracket	4
H161892	Tube	1
H161926	Shield, Inner	1
H161927	Shield, Outer	1
H162189	Retainer	1
H162662	Finger, Auger(Steel)	25
H168246	Ring	1
H168297	Shield	1
H168575	Housing	1
H172176	Bracket	1
H172535	Support, Hex Shaft	1
H86918	Screw, Finger	64

H87044	Guide, Finger	24
H87192	Cap, Finger	24
H87193	Caps	8
H99303	Washer	1
14M7275	Nut, M12	6
14M7299	Nut, M12 Flange	4
14M7396	Locknut, M8 Flange	1
14M7400	Locknut, M10 Flange	1
14M7401	Locknut, M12	4
19M7791	Screw, M12 X 40	4
19M7802	Screw, M8 X 65	1
19M7807	Screw, M10x60	1
24M7242	Washer, 21.4 X 42 X 5mm	4
38H1162	Hydf, -10 Orb X 10 ORF M Adapter	2

X401